

Atlas Copco Stationary Air Compressors

GA315 - GA355 - GA400 - GA450 - GA500

Parts list

- Copyright 2004, Atlas Copco Airpower n.v., Antwerp, Belgium.
Any unauthorized use or copying of the contents or any part thereof is prohibited. This applies in particular to trademarks, model denominations, part numbers and drawings.
- **Use only authorized parts.** Any damage or malfunction caused by the use of unauthorized parts is not covered by Warranty or Product Liability.

No. 2930 1370 00

Registration code: APC GA \geq 90 / 39 / 989

2004-01

www.atlascopco.com

Atlas Copco

Contents
Inhoud
Innehåll
Inhaltsverzeichnis
Table des matières
Indice

Indice
Inneholdsfortegnelse
Indice
Indholdsfortegnelse
Sisällysluettelo

Drive arrangement Aandrijfuitvoering Drivarrangemang Antriebsanordnung Dispositif d'entraînement Disposición de accionamiento Disposizione di azionamento Arrangement Disposição de accionamento Drivarrangement Rakene 1	Air outlet Luchtuitlaat Luftutlopp Luftauslaß Sortie d'air Salida de aire Mandata dell'aria Luftafgang Saída de ar Luftutløp Paineilmaputki 6
Unloading valve Ontlastventiel Avlastningsventil Entlastungsventil Soupape de décharge Válvula de descarga Valvola di messa a vuoto Aflastningsventil Válvula de descarga Avlastningsventil Kevennysventtiili 2	Oil system Oliesysteem Oljesystem Ölsystem Système d'huile Sistema de aceite Sistema dell'olio Oliesystem Sistema de óleo Oljesystem Voitelujärjestelmä 7
Air inlet Luchtinlaat Luftintag Lufteinlaß Admission d'air Entrada de aire Presa d'aria Luftindsug Admissão de ar Luftinnløp Tuloilma 3	Cooler(s) Koeler(s) Kylare Kühler Refrroidisseur(s) Refrigerador(es) Refrigeratore(i) Kølere Refrigerador(es) Kjøler(e) Jäähdyttimet 8
Air receiver Luchtketel Luftbehållare Luftbehälter Réservoir d'air Depósito de aire Serbatoio dell'aria Luftbeholder Reservatório de ar Luftbeholder Ilmasäiliö 4	Water system Watersysteem Vattensystem Wassersystem Système d'eau Sistema de agua Sistema dell'acqua Vandsystem Sistema de água Vannsystem Vesijärjestelmä 9
Air flow Luchtstroming Luftflöde Luftstrom Flux d'air Flujo de aire Flusso d'aria Luftflow Fluxo de ar Luftstrøm Ilman virtaus 5	Frame Frame Ram Rahmen Châssis Bastidor Telaio Ramme Base Ramme Runko 10

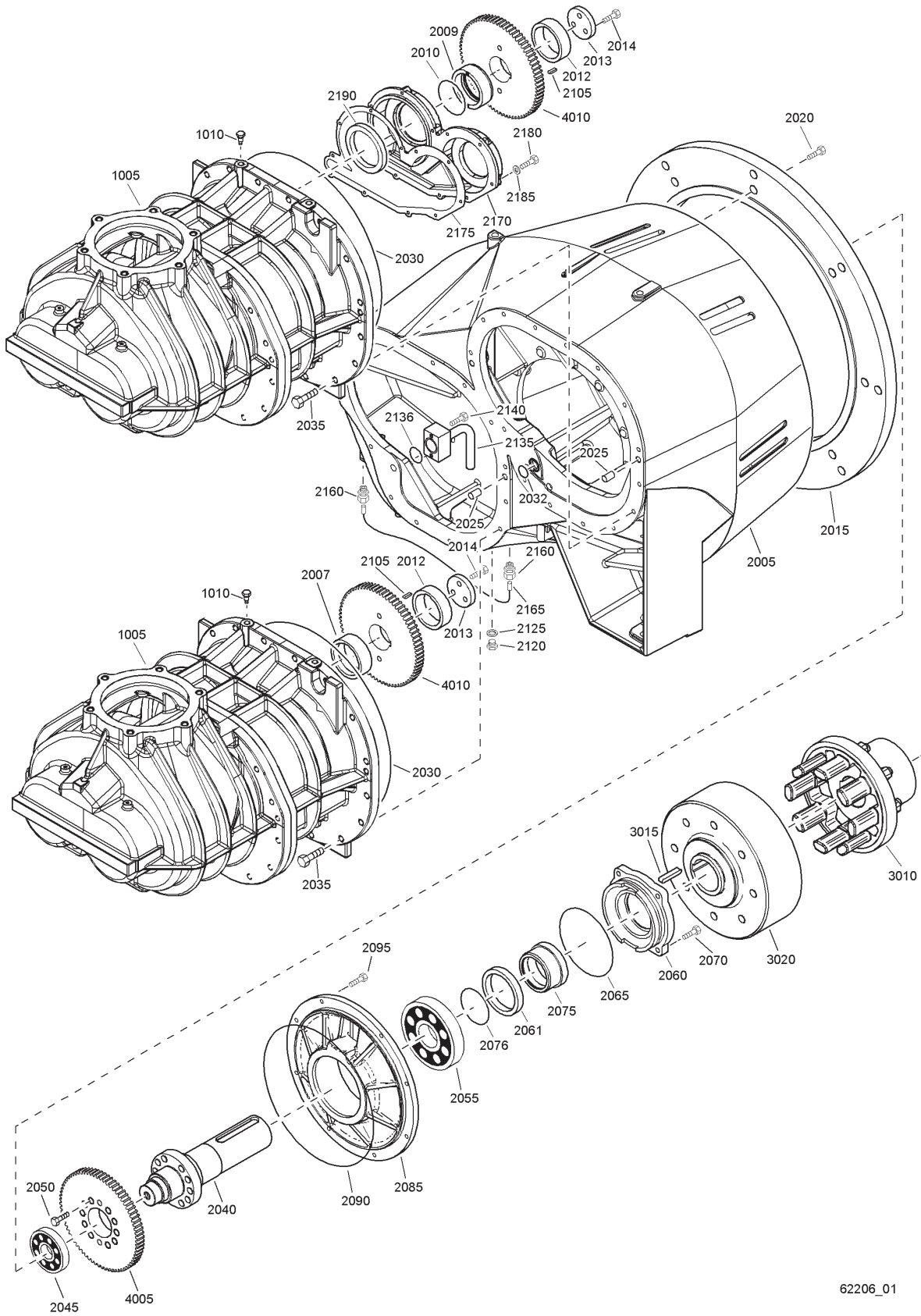
Contents
 Inhoud
 Innehåll
 Inhaltsverzeichnis
 Table des matières
 Indice

Indice
 Innehållsförtegnelse
 Índice
 Indholdsfortegnelse
 Sisällysluettelo

Regulating system Regelsysteem Reglersystem Regelsystem Système de régulation Sistema de regulación Sistema di regolazione Reguleringsystem Sistema de regulação Reguleringsystem Säätöjärjestelmä	11	Start cubicle - star/delta Startkast - ster/driehoek Startskåp - stjärn/triangel Anlaßschrank - Stern/Dreieck Armoire de démarrage - étoile/triangle Cubículo de arranque - estrella/triángulo Armadio apparecch. di avviamento - stella/triangolo Starterskab - stjerne/trekant Cubículo-arranque estrela/triângulo Startskap - stjerne-trekant Käynnistinkotelo - Y/D	
Drain system Aftapsysteem Avtappningssystem Ablaßsystem Système de vidange Sistema de drenaje Sistema di scarico Dränsystem Sistema de drenagem de condensados Avtappningssystem Lauhteenpoistojärjestelmä		- IEC - GA315 400-500V/50Hz, GA355 380V/60Hz, GA355 400-500V/50Hz, GA400 460V/60Hz, GA400 500V/50Hz, GA450 500V/50Hz	17
- Basic drain	12	- IEC - GA355 460V/60Hz, GA400 380V/60Hz, GA400 400V/50Hz, GA450 400V/50Hz, GA450 460V/60Hz	18
- Electronic Drain system	13	- CSA/UL - GA355 460-575V/60Hz, GA400 460-575V/60Hz, GA450 575V/60Hz	19
- Oil Separator Condensate drain	14	- CSA/UL - GA450 460V/60Hz	20
Bodywork Carrosserie Karosseri Karosserie Capotage Carrocería Cappottatura Karosseri Carroceria Kabinett Kotelo	15	Start cubicle - without starter Startkast - zonder starter Startskåp - utan startutrustning Anlaßschrank - ohne Starter Armoire de démarrage - sans démarreur Cubículo de arranque - sin arrancador Armadio apparecch. di avviamento - senza apparecchiatura di avviamento Starterskab - uden starter Cubículo-arranque - sem arrancador Startskap - uten starter Käynnistinkotelo - ilman käynnistintä	
Cubicle Kast Skåp Schaltschrank Armoire Armario Armadio elettrico Elskab Quadro Skap Kotelo	16	- 3-3.3-6-6.6kV/50Hz IEC, 2.3 -3.3-4.16-6.6kV/60Hz CSA/UL	21

1

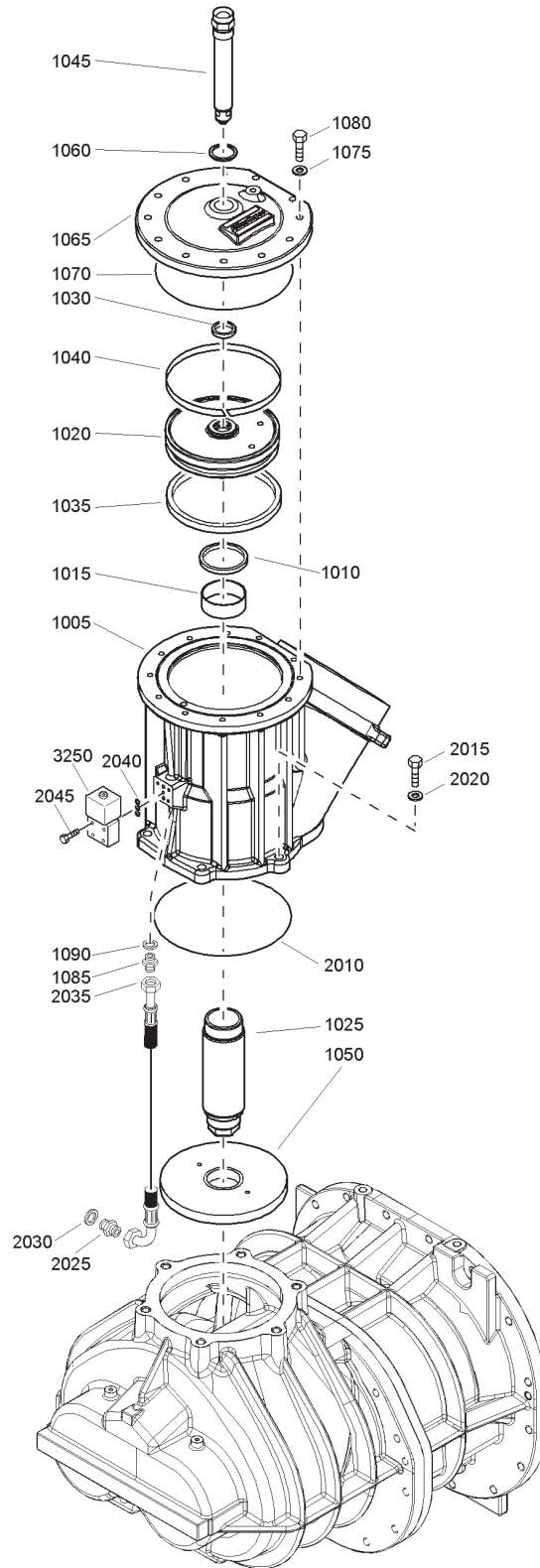
Drive arrangement



62206_01

Ref.	Part number	Qty	Name	Remarks	Ref.	Part number	Qty	Name	Remarks
1005	1616 7066 92	2	Service stage						
1010	1619 6032 00	4	Nipple						
2005		1	Gear casing						
	1621 2118 00		Flange 900 mm			1621 2407 00		GA355-8,6bar	
	1621 2118 01		Flange 1000 mm			1621 2415 00		GA355-10bar	
2007	1621 2202 00	1	Bushing			1621 2403 00		GA355-10,4bar	
2009	1621 2207 00	1	Bushing			1621 2405 00		GA355-13bar	
2010	0663 2106 16	1	O-ring			1621 2396 00		GA355-13,8bar	
2012	1621 2121 00	2	Spacer			1621 2419 00		GA400-6,9bar	
2013	1614 9100 00	2	Washer			1621 2435 00		GA400-7,5bar	
2014	0211 1409 00	6	Cap screw			1621 2429 00		GA400-8,5bar	
2015	1621 2119 00	1	Adapter			1621 2413 00		GA400-8,6bar	
			Flange 1000 mm			1621 2423 00		GA400-10bar	
2020	0147 1557 03	8	Bolt			1621 2407 00		GA400-10,4bar	
			Flange 1000 mm			1621 2411 00		GA400-13bar	
2025	0101 1626 00	4	Pin			1621 2400 00		GA400-13,8bar	
2030	0663 2111 65	2	O-ring			1621 2429 00		GA450-6,9bar	
2032	0663 2106 10	3	O-ring			1621 2440 00		GA450-7,5bar	
2035	0147 1963 88	30	Bolt			1621 2436 00		GA450-8,5bar	
2040	1621 2122 00	1	Drive shaft			1621 2423 00		GA450-8,6bar	
2045	0506 0100 15	1	Bearing			1621 2432 00		GA450-10bar	
2050	0211 1482 00	10	Cap screw			1621 2419 00		GA450-10,4bar	
2055	0506 0100 16	1	Bearing			1621 2421 00		GA450-13bar	
2060	1621 1303 00	1	Cover			1621 2409 00		GA450-13,8bar	
2061	1621 2124 00	1	Seal			1621 2438 00		GA500-6,9bar	
2065	0663 2107 24	1	O-ring			1621 2444 00		GA500-7,5bar	
2070	0147 1364 03	4	Bolt			1621 2442 00		GA500-8,5bar	
2075	1621 2123 00	1	Bushing			1621 2435 00		GA500-8,6bar	
2076	0663 2106 16	1	O-ring			1621 2438 00		GA500-10bar	
2085	1621 1302 00	1	Bearing housing			1621 2428 00		GA500-10,4bar	
2090	0663 2109 74	1	O-ring			1621 2428 00		GA500-13bar	
2095	0147 1365 03	8	Bolt			1621 2419 00		GA500-13,8bar	
2105	0337 0009 46	2	Parallel key						
2120	0686 3716 02	1	Plug		4010		2	Gear wheel	
2125	0661 1000 27	1	Seal washer			1621 2418 00		GA315-7,5bar	
2135	1621 2620 00	1	Pipe			1621 2414 00		GA315-8,5bar	
2136	0663 2107 82	1	O-ring			1621 2410 00		GA315-10bar	
2140	0147 1330 03	2	Bolt			1621 2399 00		GA315-13bar	
2160	0580 0014 66	2	Pipe coupling			1621 2412 00		GA355-6,9bar	
2165	1621 2127 00	1	Pipe			1621 2426 00		GA355-7,5bar	
2170	1621 2209 00	1	Cover			1621 2422 00		GA355-8,5bar	
2175	1621 2210 00	1	Gasket			1621 2408 00		GA355-8,6bar	
2180	0211 1328 00	11	Cap screw			1621 2416 00		GA355-10bar	
2185	0301 2335 00	11	Washer			1621 2404 00		GA355-10,4bar	
2190	1621 0424 00	1	Seal			1621 2406 00		GA355-13bar	
3010		1	Coupling			1621 2397 00		GA355-13,8bar	
	1621 1446 00		Motor diameter shaft 95 mm			1621 2420 00		GA400-6,9bar	
	1621 1442 00		Motor diameter shaft 100 mm			1621 2434 00		GA400-7,5bar	
						1621 2430 00		GA400-8,5bar	
	1621 1444 00		Motor diameter shaft 110 mm			1621 2414 00		GA400-8,6bar	
						1621 2424 00		GA400-10bar	
	1621 2247 00		Motor diameter shaft 95 mm (GA500)			1621 2408 00		GA400-10,4bar	
						1621 2412 00		GA400-13bar	
	1621 2204 00		Motor diameter shaft 110 mm (GA500)			1621 2401 00		GA400-13,8bar	
						1621 2430 00		GA450-6,9bar	
	1621 1445 00		Without motor (GA315-450)			1621 2441 00		GA450-7,5bar	
						1621 2437 00		GA450-8,5bar	
	1621 2205 00		Without motor (GA500)			1621 2424 00		GA450-8,6bar	
3015	0337 0009 54	1	Parallel key			1621 2433 00		GA450-10bar	
3020		1	Coupling			1621 2420 00		GA450-10,4bar	
	1621 2203 00		GA500			1621 2422 00		GA450-13bar	
	1621 1443 00		Others			1621 2410 00		GA450-13,8bar	
4005		1	Gear wheel			1621 2439 00		GA500-6,9bar	
	1621 2417 00		GA315-7,5bar			1621 2445 00		GA500-7,5bar	
	1621 2413 00		GA315-8,5bar			1621 2443 00		GA500-8,5bar	
	1621 2409 00		GA315-10bar			1621 2434 00		GA500-8,6bar	
	1621 2398 00		GA315-13bar			1621 2439 00		GA500-10bar	
	1621 2411 00		GA355-6,9bar			1621 2427 00		GA500-10,4bar	
	1621 2425 00		GA355-7,5bar			1621 2427 00		GA500-13bar	
	1621 2421 00		GA355-8,5bar			1621 2420 00		GA500-13,8bar	

2

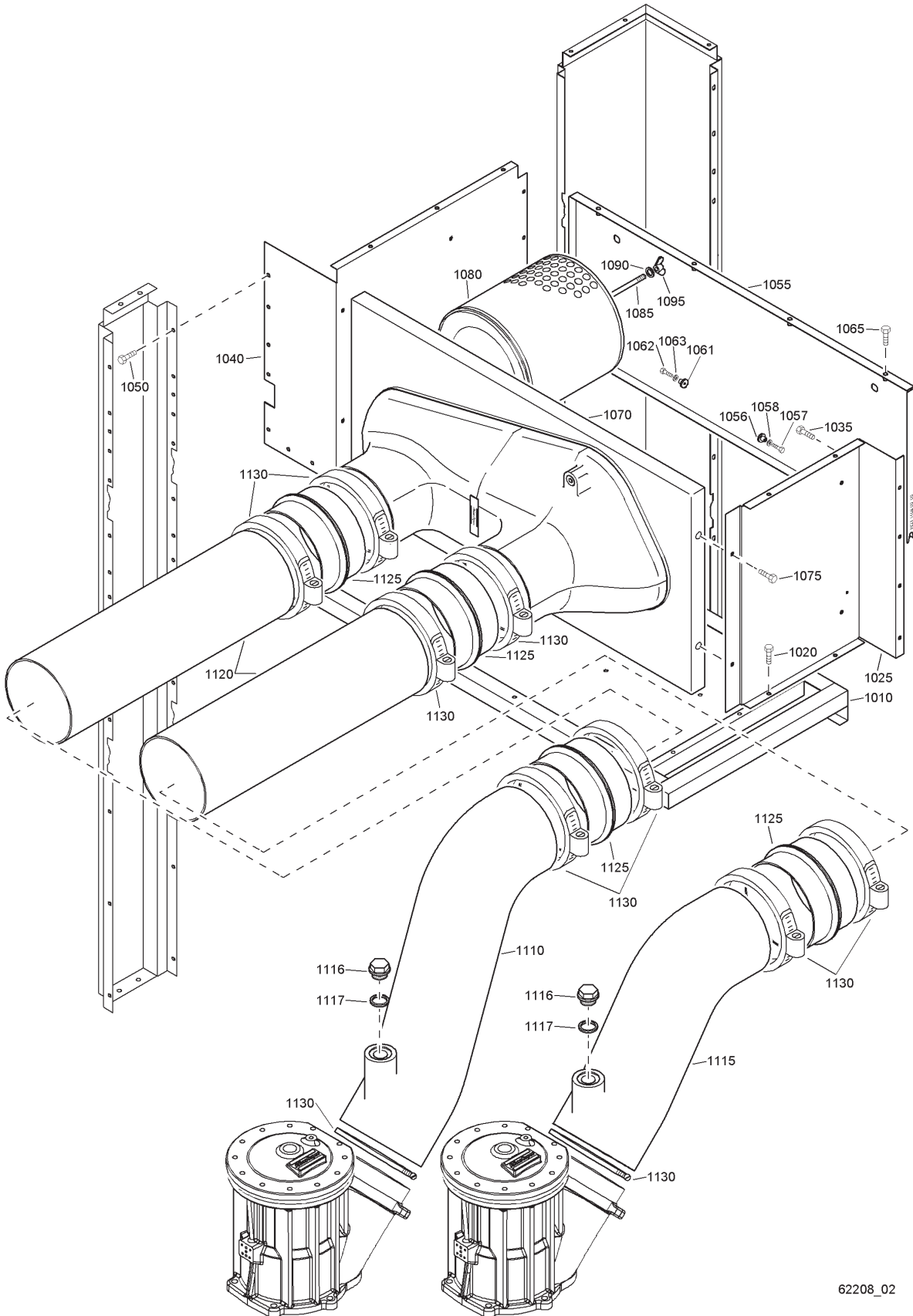


62220_20

Unloading valve

Ref.	Partnumber	Qty	Name	Remarks	Ref.	Part number	Qty	Name	Remarks
	1621 1297 80	2	Unloader assembly		1070	0663 2103 22 •	1	O-ring	
1005	1621 1299 00 •	1	Valve housing		1075	0301 2358 00 •	12	Washer	
1010	1621 2221 00 •	1	Seal		1080	0147 1403 03 •	12	Bolt	
1015	1621 2222 00 •	1	Bearing		1085	1079 5840 03 •	1	Nipple	
1020	1621 1298 00 •	1	Piston		1090	0661 1000 26 •	1	Seal washer	
1025	1621 2224 00 •	1	Piston rod		2010	0663 2103 22	1	O-ring	
1030	1621 2225 00 •	1	Seal		2015	0147 1480 03	6	Bolt	
1035	1621 2226 00 •	1	Seal		2020	0301 2378 00	6	Washer	
1040	1621 2227 00 •	1	Bearing		2025	1079 5840 03	1	Nipple	
1045	1621 2228 00 •	1	Nozzle		2030	0661 1000 26	1	Seal washer	
1050	1621 2229 00 •	1	Valve		2035	0574 8234 31	1	Hose assembly	
1060	0661 1000 31 •	1	Seal washer		2040	0663 2111 54	3	O-ring	
1065	1621 1297 00 •	1	Housing		2045	0211 1251 03	4	Bolt	
					3250	1089 0590 24	2	Solenoid valve	

3



62208_02

Air inlet

Ref.	Partnumber	Qty	Name	Remarks	Ref.	Partnumber	Qty	Name	Remarks
1010	1621 1455 80	1	Baffle	3)	1090	0301 2344 00	3	Washer	
1020	1079 1472 06	5	Bolt		1095	0296 1111 02	3	Wing nut	
1025	1621 1457 80	1	Baffle	1)	1110	1621 1463 00	1	Pipe	
1035	1079 1472 06	6	Bolt		1115	1621 1464 00	1	Pipe	
1040	1621 1458 80	1	Baffle	1)	1116	0686 4209 00	2	Plug	
1050	1079 1472 06	16	Bolt		1117	0661 1000 31	2	Seal washer	
1055	1621 1459 80	1	Baffle	2)	1120	1621 1465 00	2	Pipe	
	2252 7237 00	2	Doorlock		1125	1621 1466 00	6	Hump hose	
1056	2255 2148 00	2	Stud		1130	1030 1005 03	12	Hose clamp	
1057	0147 1244 03	2	Bolt						Lined with / Bekleed met / Beklädd med /
1058	0301 2321 00	2	Washer						Ausgekleidet mit / Garnir de / Rivestido de / Allineato con /
1061	2255 2148 00	2	Stud						Foret med / Revestido com / Kledd med / Vuorattu :
1062	0147 1244 03	2	Bolt						1) Foam : 0395 6001 66 (AR) 25 x 2040 x 1650 self-
1063	0301 2321 00	2	Washer						adhesive
1065	1079 1472 06	4	Bolt						2) Foam : 0395 6001 67 (AR) 30 x 2040 x 1650 self-
1070	1621 1461 00	1	Collector						adhesive
1075	1079 1472 06	12	Bolt						3) Foam : 0395 6001 69 (AR) 50 x 2040 x 1650 self-
1080	1621 0547 00	3	Filter element						adhesive
1085	0248 9980 25	3	Threaded rod						

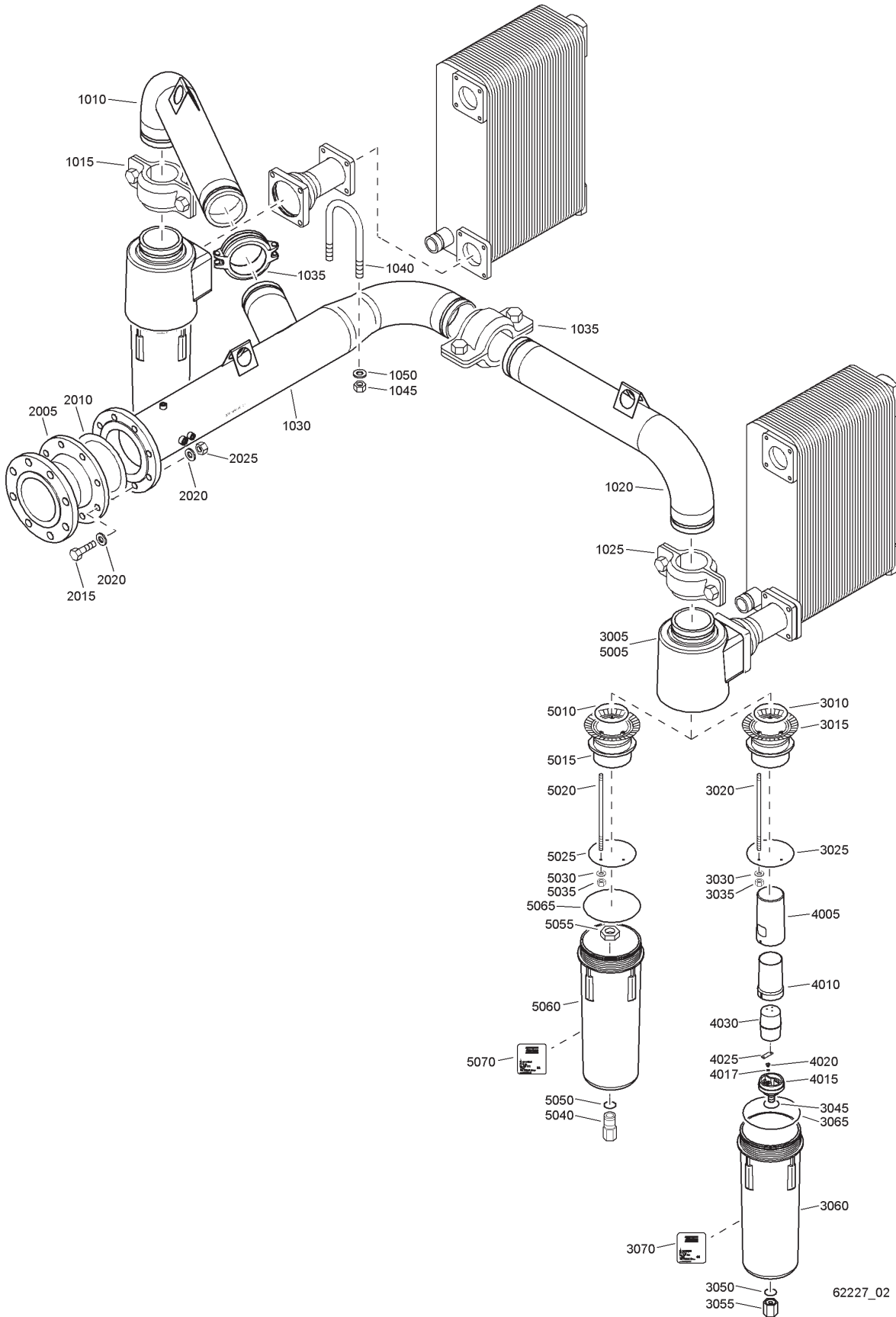
Air receiver

Ref.	Partnumber	Qty	Name	Remarks	Ref.	Partnumber	Qty	Name	Remarks
	1621 9361 80	2	Air receiver		2105	0661 1000 29	1	Seal washer	
	1621 9361 85		CE		2110	1614 9525 00	1	Suction pipe	
			As, D, CHINA,			1614 9523 80	2	Minimum pressure valve	
			SINGAPORE		3020	1614 7277 00	• 1	Piston	
1005		• 2	Vessel		3025	1619 6199 00	• 1	Sealring	
	1621 9361 08		CE		3030	1614 7276 00	• 1	Check valve	
	1621 9361 05		As, D, CHINA,		3035	1614 7279 00	• 1	Washer	
			SINGAPORE		3040	1614 7281 00	• 1	Washer	
1010		• 2	Valve housing		3045	2254 9215 00	• 1	Lockplate	
	1621 9365 08		CE		3050	0147 1322 03	• 3	Bolt	
	1621 9365 05		As, D, CHINA,		3055	1614 7280 00	• 1	Compr.spring	
			SINGAPORE		3060	1614 9523 00	• 1	Cover	
1015	0663 2109 45	• 1	O-ring		3065	0147 1958 97	• 2	Bolt	
1020	0663 2109 45	• 1	O-ring		3066	0301 2335 00	• 2	Washer	
1025	1614 9089 00	• 1	Pivot pin		3070	1614 9524 00	• 1	Sleeve	
1030	0301 2394 00	• 12	Washer		4010		2	Hexagon nipple	
1035	0147 1962 38	• 12	Bolt			0603 4108 03		11bar	
2005	1614 9541 00	3	Spacer			0603 4108 03		15bar (1"1/2 thread)	
2010	1614 9542 00	3	Buffer			0603 5125 03		15bar (1" thread)	
2015	0333 3232 00	3	Lock washer		4015		2	Elbow	
2020	0147 1364 03	3	Bolt			0560 0200 56		11bar	
2035	0663 2106 58	1	O-ring			0560 0200 56		15bar (1"1/2 thread)	
2040	0147 1365 03	6	Bolt			0560 0200 24		15bar (1" thread)	
2060	1614 9816 00	1	Shield		4020		2	Flat gasket	
2065	1614 9520 00	1	Bushing			0653 1254 00		11bar	
2070	1621 9386 00	1	Oil sep.element			0653 1254 00		15bar (1"1/2 thread)	
2075	0147 1479 03	1	Bolt			0653 1189 00		15bar (1" thread)	
2080	1614 9184 00	1	Level gauge		4025		2	Safety valve	
2085	0661 1038 00	1	Sealing washer			0830 1008 14		11bar	
2090	1619 6249 00	1	Nipple			0830 1008 19		15bar (1"1/2 thread)	
2095	1621 9144 00	1	Hose assembly			0830 1008 18		15bar (1" thread)	
2100	1614914600	1	Plug						

Air flow

Ref.	Partnumber	Qty	Name	Remarks	Ref.	Partnumber	Qty	Name	Remarks
1010	1621 2143 00	1	Hose assembly		1105	0147 1367 03	8	Bolt	
1015	0663 2106 58	1	O-ring		1110	0301 2344 00	8	Washer	
1020	0147 1479 03	4	Bolt		1115	0306 2000 10	8	Washer	
1025	0301 2378 00	4	Washer		1120	0291 1114 00	8	Locknut	
1030	0663 2106 20	1	O-ring		1125	1614 8926 00	8	Absorber	
1035	0147 1403 03	4	Bolt		1130	0147 1503 03	4	Bolt	
1040	0301 2358 00	4	Washer		1135	1621 2145 00	1	Pipe	
1045	1621 2144 00	1	Hose assembly		1140	0663 2106 17	1	O-ring	
1046	0663 2106 58	1	O-ring		1145	0147 1363 03	4	Bolt	
1050	0147 1479 03	4	Bolt		1150	0301 2344 00	4	Washer	
1055	0301 2378 00	4	Washer		1155	1621 1439 00	1	Pipe	
1060	0663 2106 20	1	O-ring		1160	0663 2106 17	1	O-ring	
1065	0147 1403 03	4	Bolt		1165	0147 1363 03	4	Bolt	
1070	0301 2358 00	4	Washer		1170	0301 2344 00	4	Washer	
1075	1614 8997 00	2	Pipe		1175	1621 2147 00	2	Pipe	
1080	0663 2106 19	2	O-ring		1180	0663 2106 17	2	O-ring	
1085	0147 1404 03	8	Bolt		1185	0147 1363 03	8	Bolt	
1090	0301 2358 00	8	Washer		1190	0301 2344 00	8	Washer	
1095	1614 9512 00	2	Pipe		1195	0663 2106 19	2	O-ring	
1100	1614 9509 00	4	Connection		1200	0147 1403 03	8	Bolt	
	1614 9513 00 •	1	Seal		1205	0301 2358 00	8	Washer	

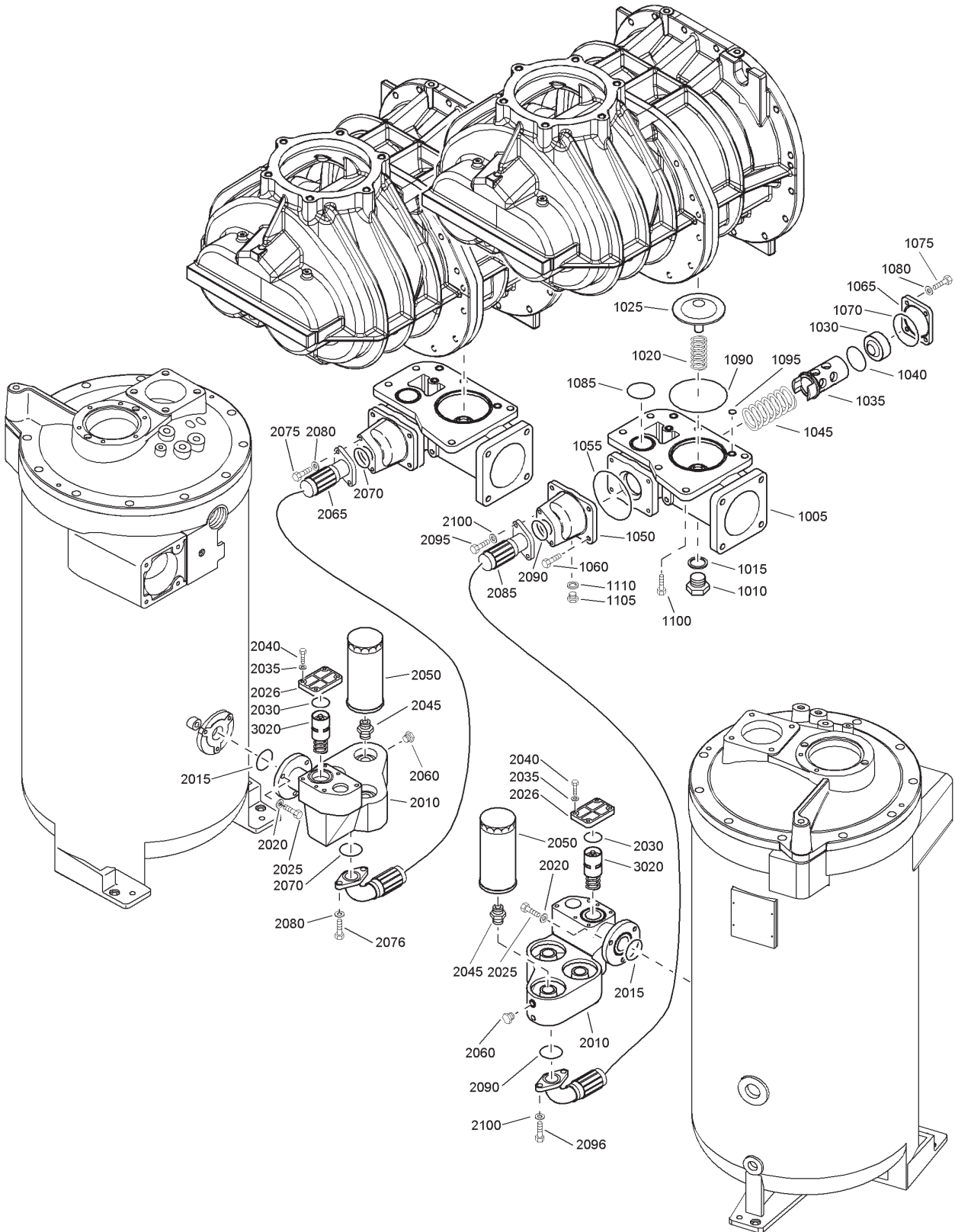
6



Air outlet

Ref.	Partnumber	Qty	Name	Remarks	Ref.	Partnumber	Qty	Name	Remarks
1010	1621 1496 00	1	Pipe		3065	0663 2108 01 •	1	O-ring	
1015	0634 1000 56	1	Victaulic coupling		3070	1621 0465 01 •	1	Label	
1020	1621 1496 00	1	Pipe			1613 9378 93 •	1	Drain valve assembly	
1025	0634 1000 56	1	Victaulic coupling		4005	1613 9380 00 ••	1	Cover	
1030	1621 1497 00	1	Pipe		4010	1613 9379 00 ••	1	Housing	
1035	0634 1000 56	2	Victaulic coupling		4015	1613 9378 00 ••	1	Drain	
1040	1619 6607 04	1	U-bolt		4017	0663 9287 00 ••	1	O-ring	
1045	0266 2112 00	2	Nut		4020	1613 9397 01 ••	1	Insert	
1050	0301 2358 00	2	Washer		4025	1613 9398 00 ••	1	Valve disc	
2005	1621 1498 00	1	Adapter		4030	1613 9385 80 ••	1	Float assy	
2010	0650 1000 90	1	Gasket			1613 9385 00 •••	1	Float half	
2015	0147 1482 03	8	Bolt			1613 9386 00 •••	1	Support	
2020	0301 2378 00	16	Washer			1614 9139 81	2	Water separator	
2025	0266 2114 00	8	Nut					For electronic waterdrain	
	1614 9139 80	2	Water separator		5005	1614 9139 00 •	1	Head	
			With float valve		5010	0663 6142 00 •	1	O-ring	
3005	1614 9139 00 •	1	Head		5015	1621 0461 00 •	1	Pipe	
3010	0663 6142 00 •	1	O-ring		5020	1621 0462 00 •	3	Rod	
3015	1621 0461 00 •	1	Pipe		5025	1621 0463 00 •	1	Disc	
3020	1621 0462 00 •	3	Rod		5030	0301 2118 01 •	3	Washer	
3025	1621 0463 00 •	1	Disc		5035	0291 1107 00 •	3	Lock nut	
3030	0301 2118 01 •	3	Washer		5040	1613 9946 00 •	1	Connection	
3035	0291 1107 00 •	3	Lock nut		5050	0663 2111 27 •	1	O-ring	
3045	0663 2133 00 •	1	O-ring		5055	0261 2118 00 •	1	Nut	
3050	0663 2111 27 •	1	O-ring		5060	1613 9464 00 •	1	Bowl	
3055	1613 9381 00 •	1	Nut		5065	0663 2108 01 •	1	O-ring	
3060	1613 9464 00 •	1	Bowl		5070	1621 0465 02 •	1	Label	

7

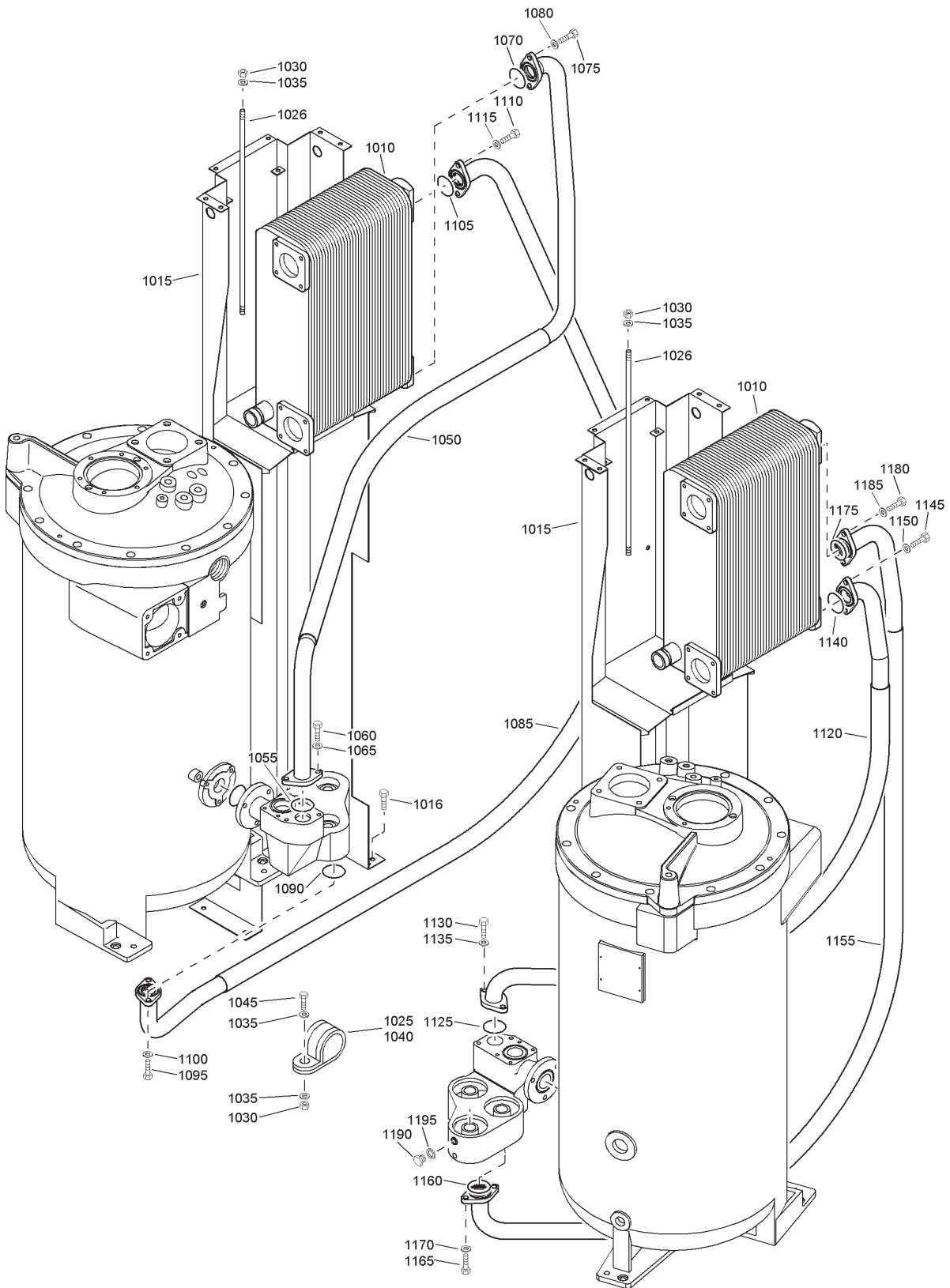


62232_05

Oil system

Ref.	Partnumber	Qty	Name	Remarks	Ref.	Part number	Qty	Name	Remarks
1005	1614 8980 00	1	Valve housing		2090	0663 2109 68	2	O-ring	
1010	1614 8976 00	1	Plug		2095	0147 1363 03	2	Bolt	
1015	0661 1000 30	1	Seal washer		2096	0147 1362 03	2	Bolt	
1020	1614 8978 00	1	Spring		2100	0301 2344 00	4	Washer	
1025	1614 8977 00	1	Check valve		3020		2	Thermostatic valve	
1030	1614 8974 00	1	Piston			1202 5869 01		GA315-10bar, GA355-10,4bar, GA400-10,4bar, GA500-13bar, GA500-13,8bar	
1035	1614 8973 00	1	Valve						
1040	0663 2111 67	1	O-ring						
1045	1614 8979 00	1	Spring						
1050	1614 8972 00	1	Cover						
1055	0663 2106 18	1	O-ring			1202 5869 02		GA315-7,5bar, GA355-6,9bar, GA355-7,5bar, GA355-8,5bar, GA400-6,9bar, GA400-7,5bar, GA400-8,5bar, GA400-8,6bar, GA450-6,9bar, GA450-7,5bar, GA450-8,5bar, GA450-8,6bar, GA450-10bar, GA500-6,9bar, GA500-7,5bar, GA500-8,5bar, GA500-8,6bar, GA500-10bar, GA500-10,4bar	
1060	0147 1363 03	4	Bolt						
1065	1614 8975 00	1	Flange						
1070	0663 2106 57	1	O-ring						
1075	0147 1363 03	4	Bolt						
1080	0301 2344 00	4	Washer						
1085	0663 2102 89	1	O-ring						
1090	0663 2111 58	1	O-ring						
1095	0663 2111 66	3	O-ring						
1100	0211 1960 28	6	Cap screw						
1105	0686 3716 01	2	Plug						
1110	0661 1000 25	2	Seal washer						
2010	1614 9006 01	2	Oil filter housing						
2015	0663 2107 77	2	O-ring						
2020	0301 2344 00	6	Washer						
2025	0147 1363 03	6	Bolt						
2026	1614 9007 00	2	Cover						
2030	0663 2107 77	2	O-ring						
2035	0301 2335 00	8	Washer						
2040	0147 1325 03	8	Bolt			1202 5869 03		GA355-8,6bar, GA355-10bar, GA400-10bar, GA450-10,4bar, GA315-8,5bar, GA315-13bar, GA355-13bar, GA355-13,8bar, GA400-13bar, GA400-13,8bar, GA450-13bar, GA450-13,8bar	
2045		6	Nipple						
	1614 8076 00		13bar, 13,8bar						
	1614 7062 00		Others						
2050		6	Oil filter			1202 5869 04			
	1614 8065 00		13bar, 13,8bar						
	1614 7273 00		Others						
2060	0686 3716 01	2	Plug						
2065	1621 1440 00	1	Hose assembly						
2070	0663 2109 68	2	O-ring						
2075	0147 1363 03	2	Bolt						
2076	0147 1362 03	2	Bolt						
2080	0301 2344 00	4	Washer			1202 5868 00 •	1	Spring	
2085	1621 1499 00	1	Hose assembly						

8

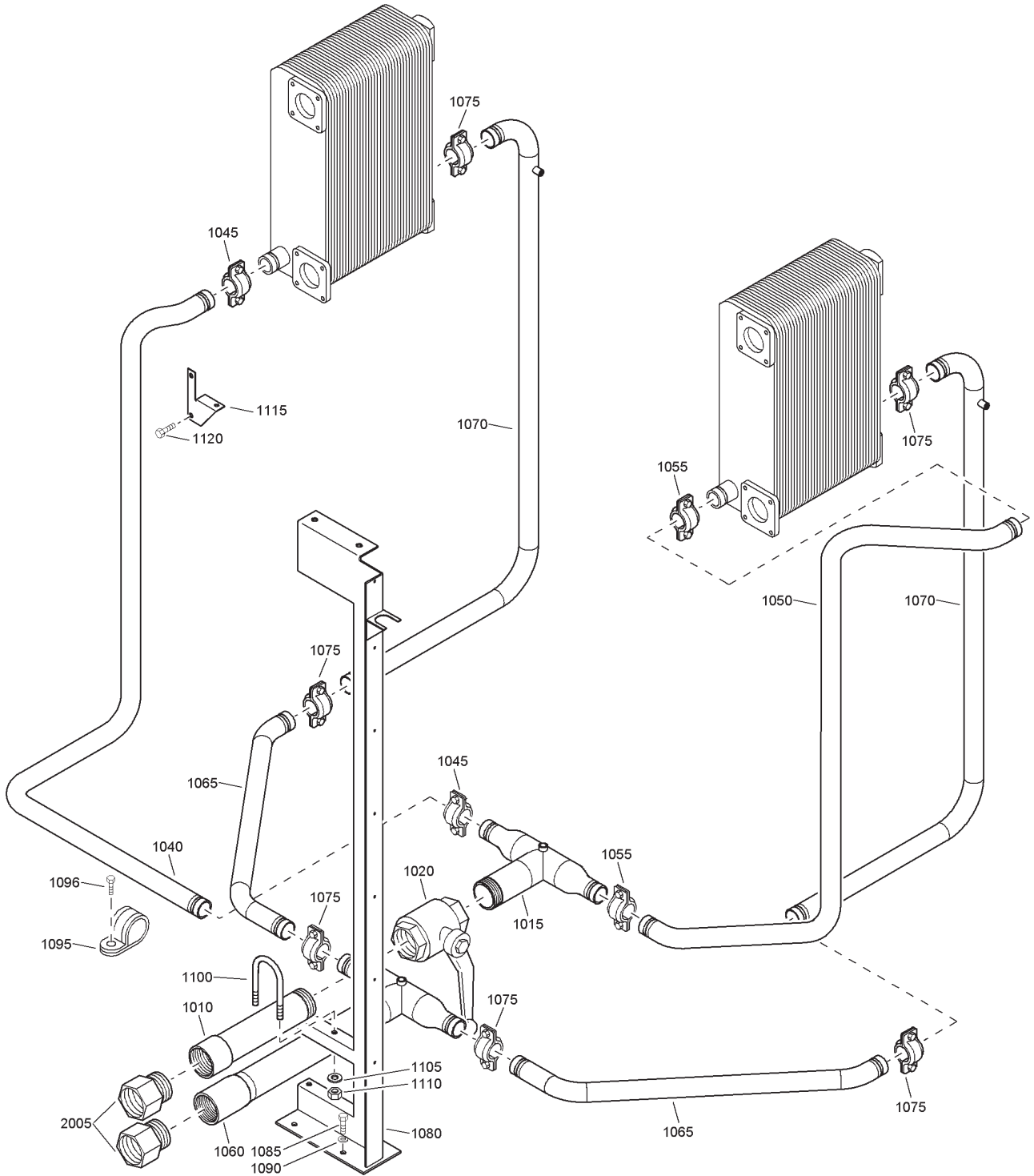


62240_04

Coolers

Ref.	Partnumber	Qty	Name	Remarks	Ref.	Partnumber	Qty	Name	Remarks
1010	1621 1491 00	2	Cooler		1105	0663 2109 68	1	O-ring	
1015	1621 1492 00	2	Support		1110	0147 1362 03	2	Bolt	
1016	1619 2766 00	16	Bolt		1115	0301 2344 00	2	Washer	
1025	1619 2861 05	4	Clamp		1120	1621 1494 00	1	Hose assembly	
1026	0248 9980 65	4	Threaded rod		1125	0663 2109 68	1	O-ring	
1030	0291 1128 20	8	Nut		1130	0147 1363 03	2	Bolt	
1035	0301 2344 00	12	Washer		1135	0301 2344 00	2	Washer	
1040	1619 2861 05	4	Clamp		1140	0663 2109 68	1	O-ring	
1045	1079 1472 06	4	Bolt		1145	0147 1362 03	2	Bolt	
1050	1621 1441 00	1	Hose assembly		1150	0301 2344 00	2	Washer	
1055	0663 2109 68	1	O-ring		1155	1621 1495 00	1	Hose assembly	
1060	0147 1363 03	2	Bolt		1160	0663 2109 68	1	O-ring	
1065	0301 2344 00	2	Washer		1165	0147 1362 03	2	Bolt	
1070	0663 2109 68	1	O-ring		1170	0301 2344 00	2	Washer	
1075	0147 1362 03	2	Bolt		1175	0663 2109 68	1	O-ring	
1080	0301 2344 00	2	Washer		1180	0147 1362 03	2	Bolt	
1085	1621 1493 00	1	Hose assembly		1185	0301 2344 00	2	Washer	
1090	0663 2109 68	1	O-ring		1190	0686 3716 01	4	Plug	
1095	0147 1363 03	2	Bolt		1195	0661 1000 25	4	Seal washer	
1100	0301 2344 00	2	Washer						

9

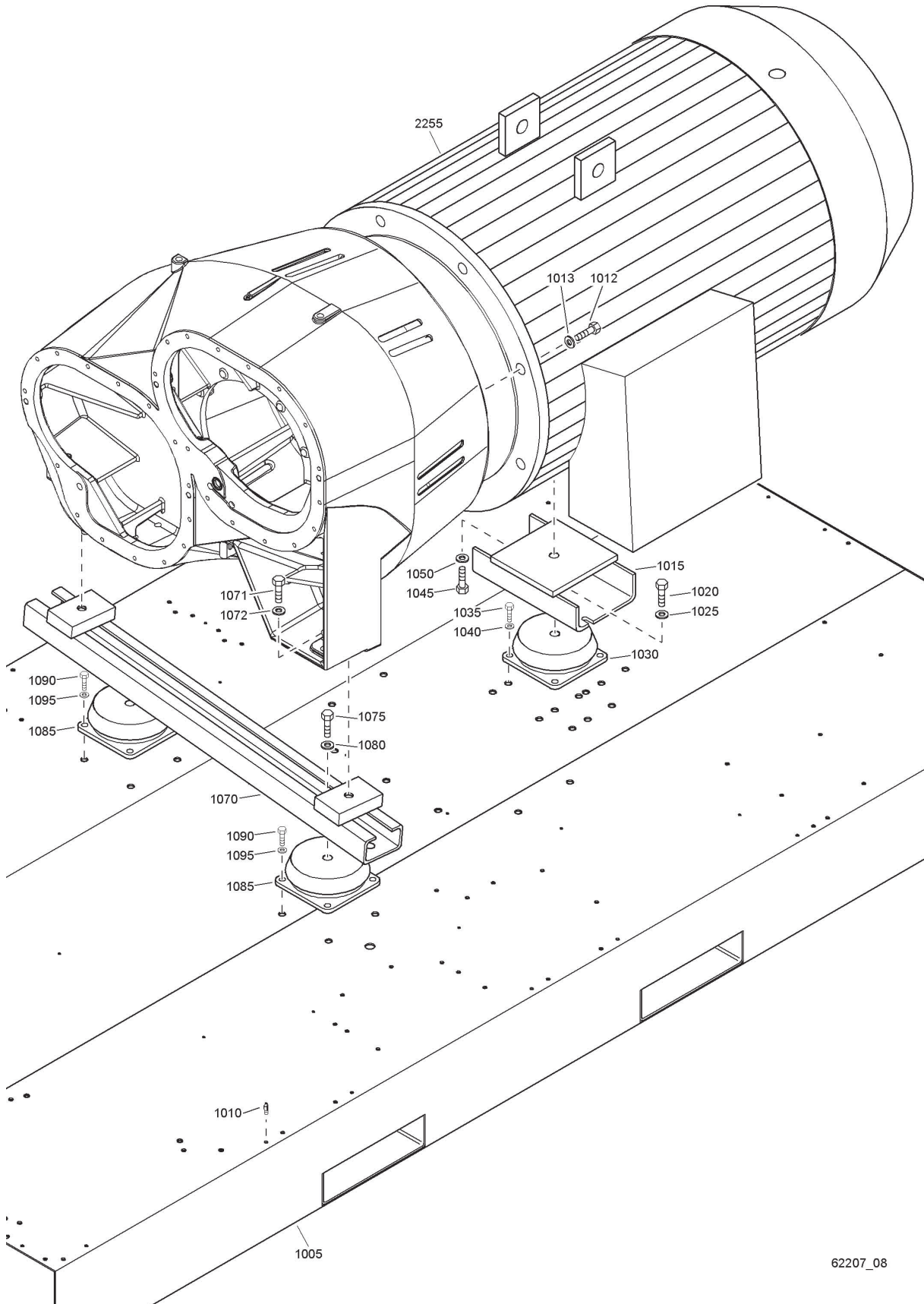


62237_06

Water system

Ref.	Partnumber	Qty	Name	Remarks	Ref.	Partnumber	Qty	Name	Remarks
1010	1621 2100 00	1	Pipe		1080	1621 2107 00	1	Support	
1015	1621 2101 00	1	Pipe		1085	0147 1364 03	4	Bolt	
1020	1619 6153 10	1	Ball valve		1090	0301 2344 00	4	Washer	
1040	1621 2102 00	1	Pipe		1095	1619 2861 01	4	Clamp	
1045	0634 1000 27	2	Victaulic coupling		1096	1079 1472 06	4	Bolt	
1050	1621 2103 00	1	Pipe		1100	0346 2900 23	2	U-bolt	
1055	0634 1000 27	2	Victaulic coupling		1105	0301 2335 00	4	Washer	
1060	1621 2104 00	1	Pipe		1110	0291 1128 18	4	Lock nut	
1065	1621 2105 00	2	Pipe		1115	1621 2108 00	1	Support	
1070	1621 2106 00	2	Pipe		1120	1079 1472 06	2	Bolt	
1075	0634 1000 27	6	Victaulic coupling		2005	0605 8350 29	2	Bushing	

10



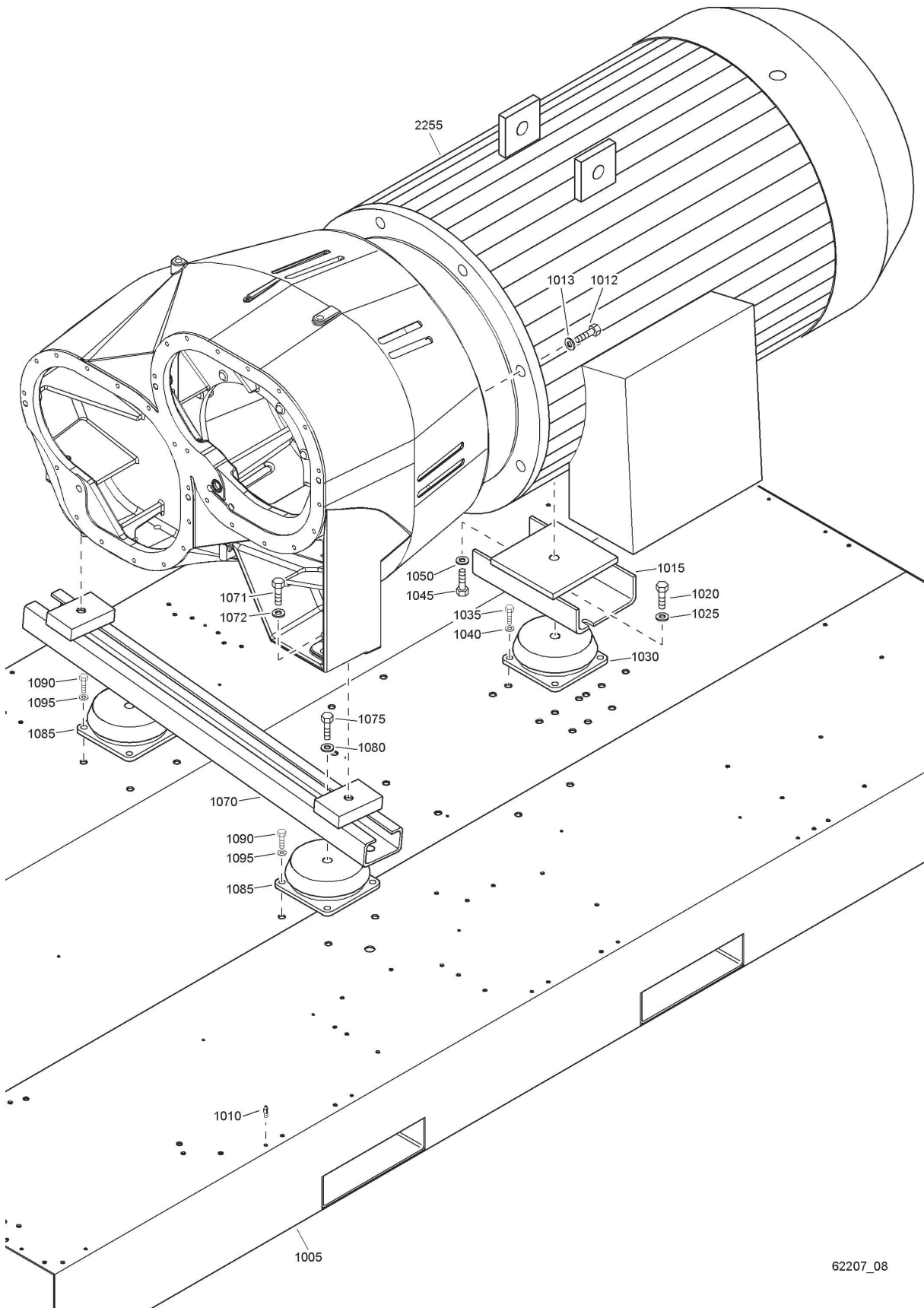
62207_08

62207_08

Frame

Ref.	Partnumber	Qty	Name	Remarks	Ref.	Partnumber	Qty	Name	Remarks
1005	1621 1447 00	1	Frame		1080	2955 62		GA315 3,3kV/50Hz	IEC
1010	1614 9851 00	2	Pin		1080	2955 65		GA315 6kV/50Hz	IEC
1012	0147 1555 03	8	Bolt		1080	2955 66		GA315 6,6kV/50Hz	IEC
1013	0300 0274 13	8	Washer		1080	2929 71		GA355 3kV/50Hz	IEC
1015		1	Support		1080	2929 72		GA355 3,3kV/50Hz	IEC
	1621 1448 00		GA400-450 ABB motors		1080	2929 75		GA355 6kV/50Hz	IEC
	1621 1450 00		IP23 motors		1080	2929 76		GA355 6,6kV/50Hz	IEC
	1621 1451 00		IP55 + WEG motors		1080	2929 81		GA400 3kV/50Hz	IEC
	1621 1452 00		GA315-355 ABB motors		1080	2929 82		GA400 3,3kV/50Hz	IEC
1020	0147 1630 03	1	Bolt		1080	2929 85		GA400 6kV/50Hz	IEC
1025	0301 2405 00	1	Washer		1080	2929 86		GA400 6,6kV/50Hz	IEC
1030	1614 6366 03	1	Antivibr.pad		1080	2930 51		GA450 3kV/50Hz	IEC
1035	0147 1475 03	4	Bolt		1080	2930 52		GA450 3,3kV/50Hz	IEC
1040	0301 2378 00	4	Washer		1080	2930 55		GA450 6kV/50Hz	IEC
1045	0147 1630 03	1	Bolt		1080	2930 56		GA450 6,6kV/50Hz	IEC
1050	0301 2405 00	1	Washer		1080	2930 61		GA500 3kV/50Hz	IEC
1070	1621 2335 00	1	Support		1080	2930 62		GA500 3,3kV/50Hz	IEC
1071	0147 1632 03	2	Bolt		1080	2930 65		GA500 6kV/50Hz	IEC
1072	0301 2405 00	2	Washer		1080	2930 66		GA500 6,6kV/50Hz	IEC
1075	0147 1630 03	2	Bolt		1080	2955 71		GA355 2,3kV/60Hz	CSA-UL
1080	0301 2405 00	2	Washer						
1085	1614 6366 03	2	Antivibr.pad		1080	2955 73		GA355 3,3kV/60Hz	CSA-UL
1090	0147 1475 03	8	Bolt						
1095	0301 2378 00	8	Washer		1080	2955 74		GA355 4,16kV/60Hz	CSA-UL
2255		1	Motor						
			ABB motoren (IEC)		1080	2955 76		GA355 6,6kV/60Hz	CSA-UL
	1080 4195 01		GA315 400V/50Hz						
	1080 4195 02		GA315 400V/50Hz	1)	1080	2929 91		GA400 2,3kV/60Hz	CSA-UL
	1080 4195 03		GA315 500V/50Hz						
	1080 4195 04		GA315 500V/50Hz	1)	1080	2929 93		GA400 3,3kV/60Hz	CSA-UL
	1080 4196 01		GA355 400V/50Hz						
	1080 4196 02		GA355 400V/50Hz	1)	1080	2929 94		GA400 4,16kV/60Hz	CSA-UL
	1080 4196 03		GA355 500V/50Hz						
	1080 4196 04		GA355 500V/50Hz	1)	1080	2929 96		GA400 6,6kV/60Hz	CSA-UL
	1080 4196 21		GA355 380V/60Hz						
	1080 4196 22		GA355 380V/60Hz	1)	1080	2929 61		GA450 2,3kV/60Hz	CSA-UL
	1080 4196 23		GA355 440-460V/60Hz						
	1080 4196 24		GA355 440-460V/60Hz	1)	1080	2929 63		GA450 3,3kV/60Hz	CSA-UL
	1080 4197 01		GA400 400V/50Hz		1080	2929 64		GA450 4,16kV/60Hz	CSA-UL
	1080 4197 02		GA400 400V/50Hz	1)					
	1080 4197 03		GA400 500V/50Hz		1080	2929 66		GA450 6,6kV/60Hz	CSA-UL
	1080 4197 04		GA400 500V/50Hz	1)					
	1080 4198 01		GA450 400V/50Hz		1080	2930 71		GA500 2,3kV/60Hz	CSA-UL
	1080 4198 02		GA450 400V/50Hz	1)					
	1080 4198 03		GA450 500V/50Hz		1080	2930 73		GA500 3,3kV/60Hz	CSA-UL
	1080 4198 04		GA450 500V/50Hz	1)					
	1080 4198 21		GA400 380V/60Hz		1080	2930 74		GA500 4,16kV/60Hz	CSA-UL
	1080 4198 22		GA400 380V/60Hz	1)					
	1080 4198 23		GA400 440-460V/60Hz		1080	2930 76		GA500 6,6kV/60Hz	CSA-UL
	1080 4198 24		GA400 440-460V/60Hz	1)					
	1080 4198 27		GA450 440-460V/60Hz		1080	4077 01		IP23 SIEMENS motoren	
	1080 4198 28		GA450 440-460V/60Hz	1)	1080	4077 02		GA315 3kV/50Hz	IEC
			WEG motoren (CSA-UL)		1080	4077 05		GA315 6kV/50Hz	IEC
	1080 4199 02		GA355 440-460V/60Hz		1080	4077 06		GA315 6,6kV/50Hz	IEC
	1080 4199 04		GA355 575V/60Hz		1080	4077 11		GA355 3kV/50Hz	IEC
	1080 4199 12		GA400 440-460V/60Hz		1080	4077 12		GA355 3,3kV/50Hz	IEC
	1080 4199 14		GA400 575V/60Hz		1080	4077 15		GA355 6kV/50Hz	IEC
	1080 4199 22		GA450 440-460V/60Hz		1080	4077 16		GA355 6,6kV/50Hz	IEC
	1080 4199 24		GA450 575V/60Hz		1080	4077 21		GA400 3kV/50Hz	IEC
			IP55 SIEMENS motoren		1080	4077 22		GA400 3,3kV/50Hz	IEC
	1080 2955 61		GA315 3kV/50Hz	IEC	1080	4077 25		GA400 6kV/50Hz	IEC
					1080	4077 26		GA400 6,6kV/50Hz	IEC

10



62207_08

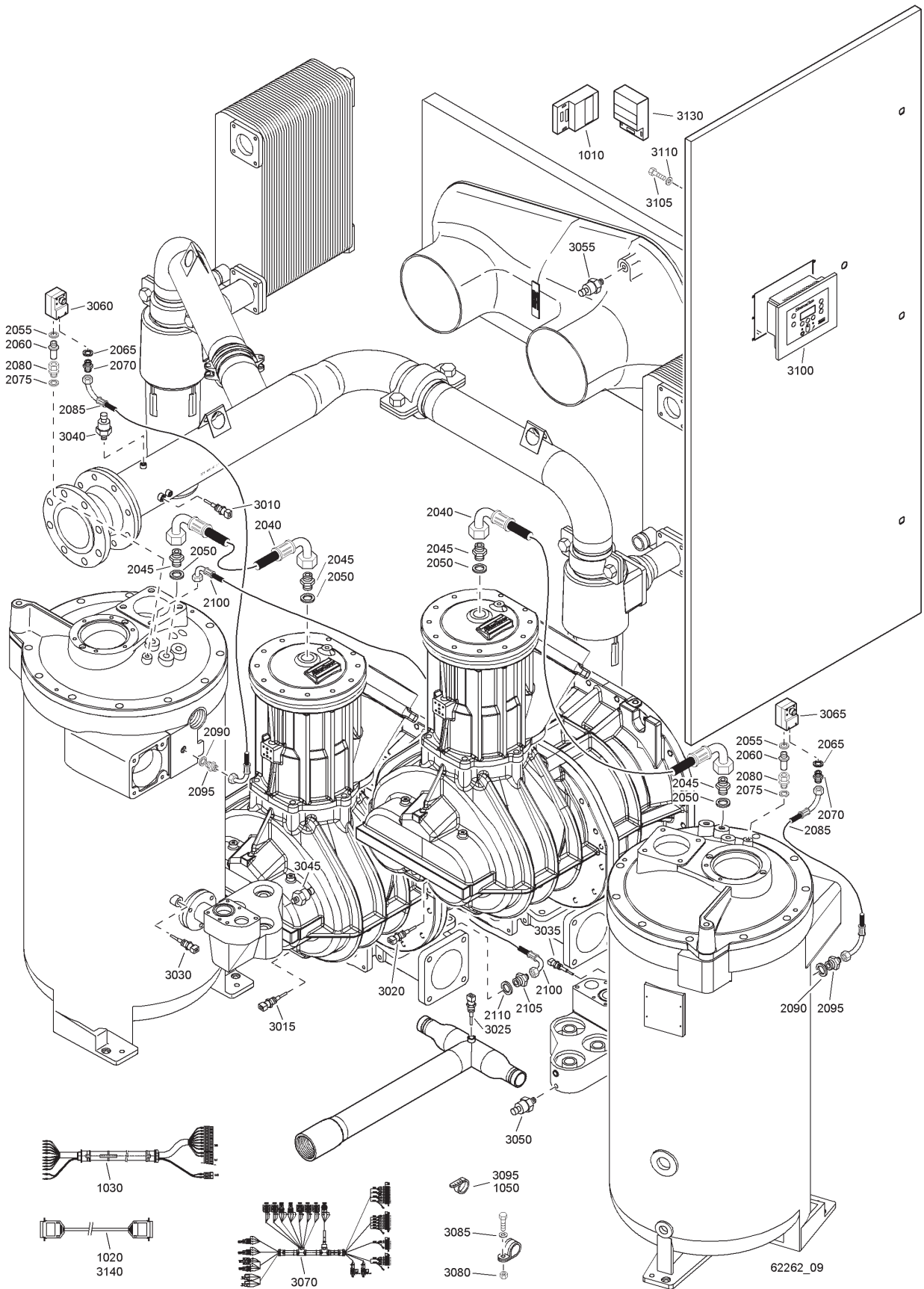
62207_08

Frame

Ref.	Partnumber	Qty	Name	Remarks
	1080 2946 81		GA450 3kV/50Hz	IEC
	1080 2946 82		GA450 3,3kV/50Hz	IEC
	1080 2946 85		GA450 6kV/50Hz	IEC
	1080 2946 86		GA450 6,6kV/50Hz	IEC
	1080 2946 61		GA500 3kV/50Hz	IEC
	1080 2946 62		GA500 3,3kV/50Hz	IEC
	1080 2946 65		GA500 6kV/50Hz	IEC
	1080 2946 66		GA500 6,6kV/50Hz	IEC
	1080 4077 31		GA355 2,3kV/60Hz	CSA- UL
	1080 4077 33		GA355 3,3kV/60Hz	CSA- UL
	1080 4077 34		GA355 4,16kV/60Hz	CSA- UL
	1080 4077 36		GA355 6,6kV/60Hz	CSA- UL
	1080 4077 41		GA400 2,3kV/60Hz	CSA- UL
	1080 4077 43		GA400 3,3kV/60Hz	CSA- UL
	1080 4077 44		GA400 4,16kV/60Hz	CSA- UL
	1080 4077 46		GA400 6,6kV/60Hz	CSA- UL
	1080 4077 51		GA450 2,3kV/60Hz	CSA- UL
	1080 4077 53		GA450 3,3kV/60Hz	CSA- UL
	1080 4077 54		GA450 4,16kV/60Hz	CSA- UL
	1080 4077 56		GA450 6,6kV/60Hz	CSA- UL
	1080 2946 71		GA500 2,3kV/60Hz	CSA- UL
	1080 2946 73		GA500 3,3kV/60Hz	CSA- UL
	1080 2946 74		GA500 4,16kV/60Hz	CSA- UL
	1080 2946 76		GA500 6,6kV/60Hz	CSA- UL

- 1) With Anti Condensation Heaters (ACON)
(PT1000_WB)

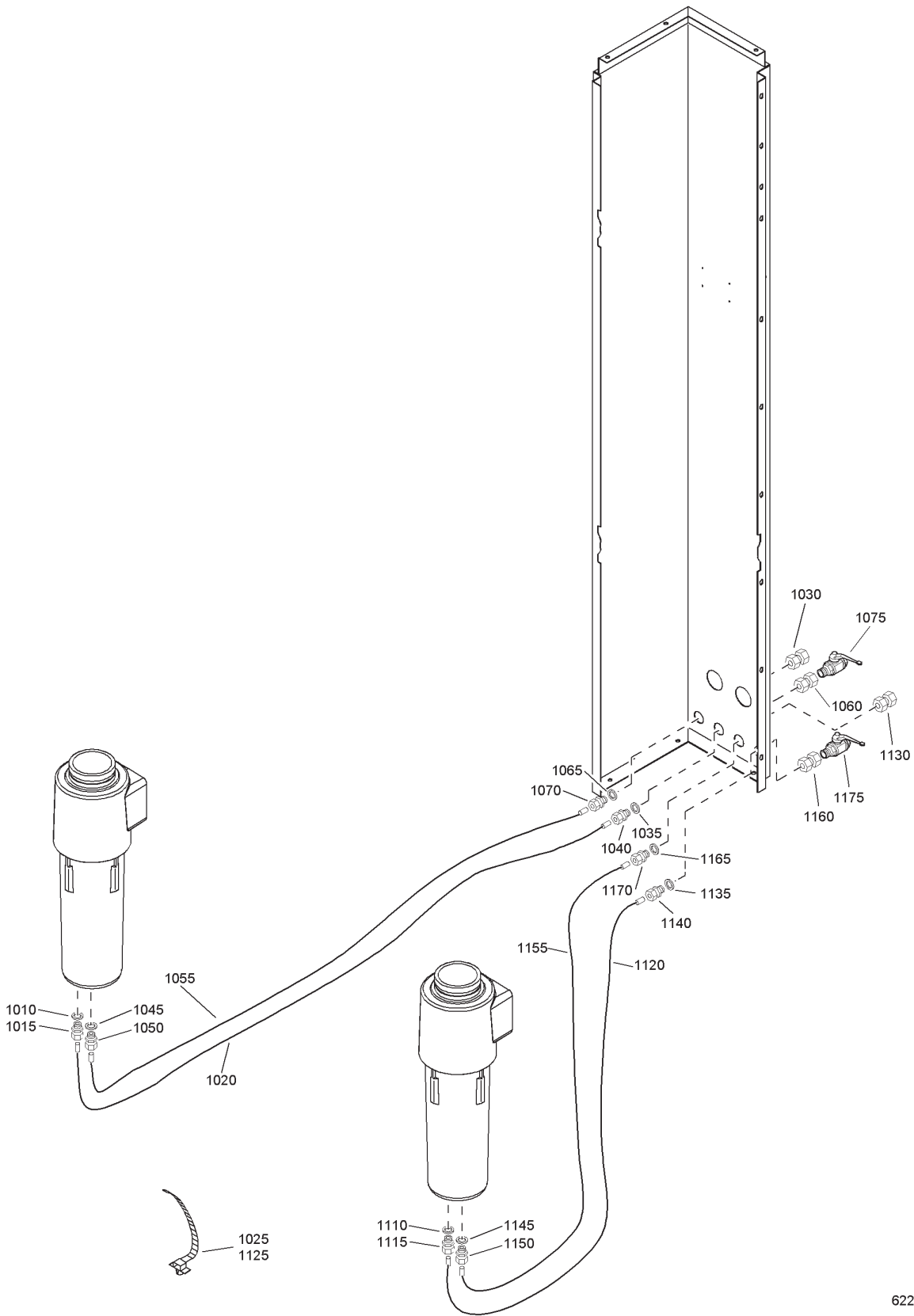
11



Regulating system

Ref.	Partnumber	Qty	Name	Remarks	Ref.	Partnumber	Qty	Name	Remarks
1010	1900 0710 82	1	Regulator Full option motor		2105	1619 5205 00	1	Nipple	
	1900 0710 62		Module PT1000 PT100 + heaters		2110	0661 1000 25	1	Seal washer	
1020	1622 0661 02	1	Cable		3010	1089 0574 40	1	Temp. sensor	
1030		1	Wire harness		3015	1089 0574 40	1	Temp. sensor	
	2000 0214 21		Full option motor		3020	1089 0574 40	1	Temp. sensor	
	2000 0214 22		PT100 + heaters		3025	1089 0574 40	1	Temp. sensor	
	1621 2355 00		SPM module		3030	1089 0574 40	1	Temp. sensor	
1050	0348 0102 06	10	Cable tie		3035	1089 0574 40	1	Temp. sensor	
2040	0574 9874 05	1	Hose assembly		3040	1089 0575 28	1	Press.transducer	
2045	2250 4983 00	1	Nipple		3045	1089 0575 28	1	Press.transducer	
2050	0661 1000 30	1	Seal washer		3050	1089 0575 28	1	Press.transducer	
2055	0661 1000 24	1	Seal washer		3055	1089 0575 73	1	Press.transducer	
2060	1615 3624 00	1	Nozzle		3060	1089 0575 20	1	Dp transducer	
2065	0661 1000 24	1	Seal washer		3065	1089 0575 20	1	Dp transducer	
2070	1079 5840 01	1	Nipple		3070	1621 2098 00	1	Wire harness	
2075	0661 1000 25	1	Seal washer		3080	0266 2110 00	2	Nut	
2080	0580 0400 03	1	Str.coupling		3085	0301 2335 00	2	Washer	
2085	0575 0361 18	1	Hose assembly		3095	0348 0102 08	14	Cable tie	
2090	0661 1000 24	1	Seal washer		3100	1900 0710 31	1	Regulator	
2095	1079 5840 01	1	Nipple		3105	0160 6039 00	4	Screw	
2100	0574 9841 23	1	Hose assembly		3110	0301 2315 00	4	Washer	
					3130	1900 0710 41	1	Regulator	
					3140	1622 0661 04	1	Cable	

12

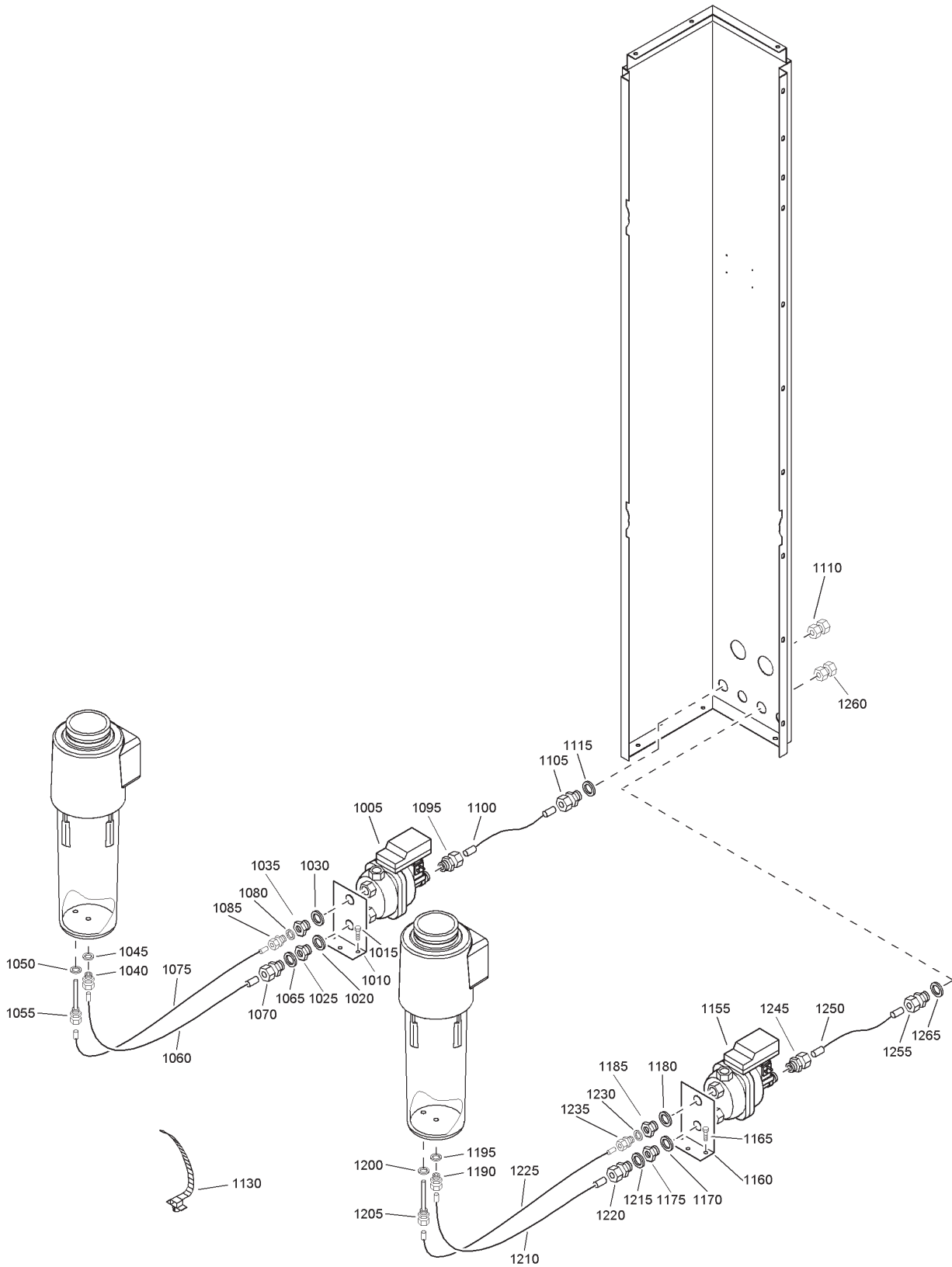


62267_06

Drain system - Basic drain

Ref.	Partnumber	Qty	Name	Remarks	Ref.	Partnumber	Qty	Name	Remarks
1010	0661 1000 25	1	Seal washer		1110	0661 1000 25	1	Seal washer	
1015	0581 0000 45	1	Pipe coupling		1115	0581 0000 45	1	Pipe coupling	
1020	0070 6002 06	AR	Plastic tube		1120	0070 6002 06	AR	Plastic tube	
1025	0348 0102 08	1	Cable tie		1125	0348 0102 08	1	Cable tie	
1030	0581 0000 86	1	Pipe coupling		1130	0581 0000 86	1	Pipe coupling	
1035	0653 1124 00	1	Flat gasket		1135	0653 1124 00	1	Flat gasket	
1040	0581 0000 53	1	Pipe coupling		1140	0581 0000 53	1	Pipe coupling	
1045	0653 1062 00	1	Flat gasket		1145	0653 1062 00	1	Flat gasket	
1050	0581 0000 45	1	Pipe coupling		1150	0581 0000 45	1	Pipe coupling	
1055	0070 6002 06	AR	Plastic tube		1155	0070 6002 06	AR	Plastic tube	
1060	0581 0000 86	1	Pipe coupling		1160	0581 0000 86	1	Pipe coupling	
1065	0653 1124 00	1	Flat gasket		1165	0653 1124 00	1	Flat gasket	
1070	0581 0000 53	1	Pipe coupling		1170	0581 0000 53	1	Pipe coupling	
1075	0852 0010 33	1	Ball valve		1175	0852 0010 33	1	Ball valve	

13

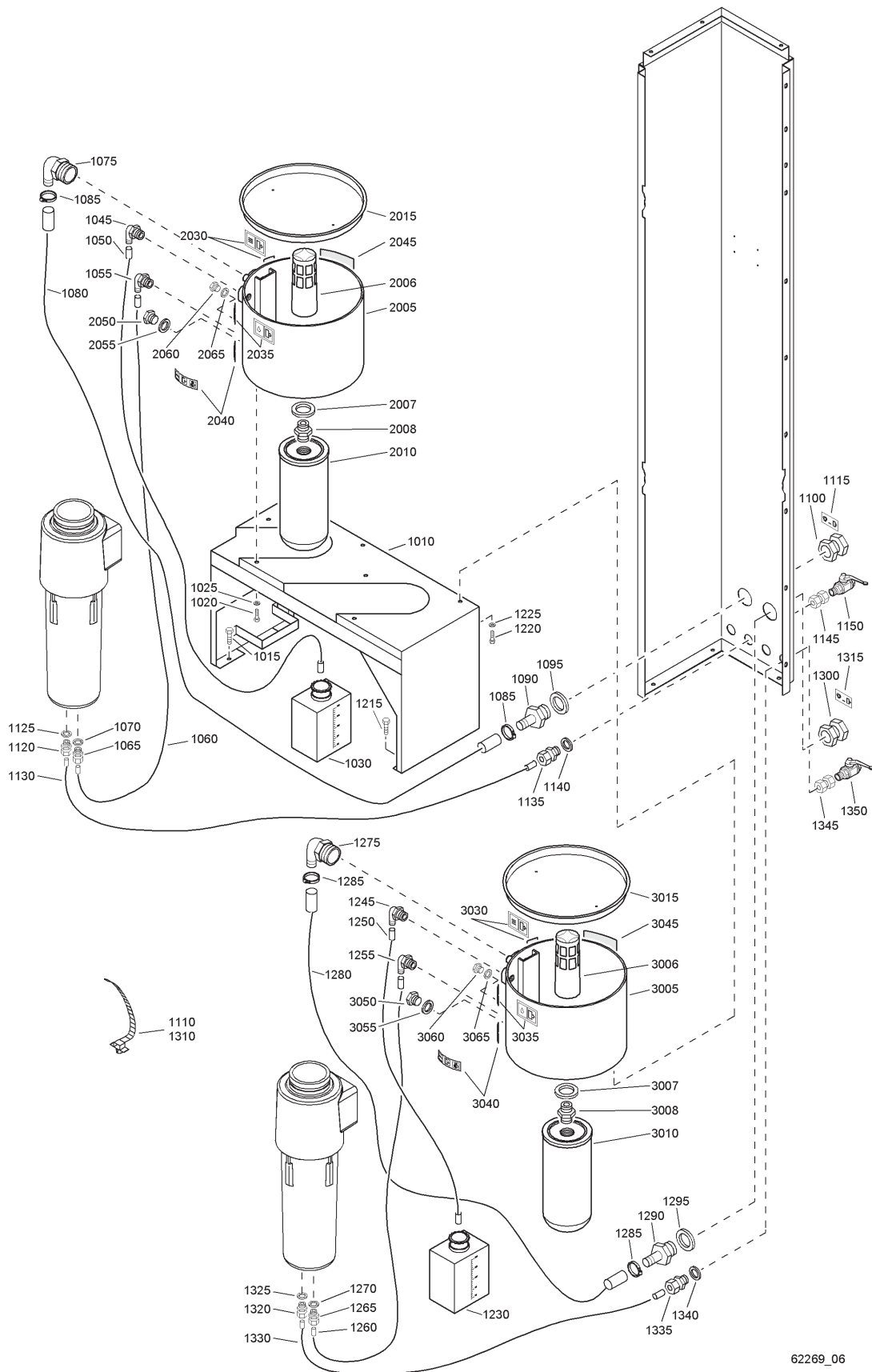


62268_06

Drain system - Electronic drain system

Ref.	Partnumber	Qty	Name	Remarks	Ref.	Partnumber	Qty	Name	Remarks
1005	8102 0425 80	1	Drain valve		1155	8102 0425 80	1	Drain valve	
	8102 0425 98		230V 50-60Hz IEC			8102 0425 98		230V 50-60Hz IEC	
			110V 50-60Hz CSA-UL					110V 50-60Hz CSA-UL	
1010	1617 1768 00	1	Support		1160	1617 1768 00	1	Support	
1015	1619 2766 00	3	Bolt		1165	1619 2766 00	3	Bolt	
1020	0661 1000 29	1	Seal washer		1170	0661 1000 29	1	Seal washer	
1025	0605 8700 84	1	Bushing		1175	0605 8700 84	1	Bushing	
1030	0661 1000 29	1	Seal washer		1180	0661 1000 29	1	Seal washer	
1035	0605 8820 05	1	Bushing		1185	0605 8820 05	1	Bushing	
1040	0581 0000 71	1	Pipe coupling		1190	0581 0000 71	1	Pipe coupling	
1045	0661 1000 27	1	Seal washer		1195	0661 1000 27	1	Seal washer	
1050	0661 1000 25	1	Seal washer		1200	0661 1000 25	1	Seal washer	
1055	1613 8084 00	1	Pipe coupling		1205	1613 8084 00	1	Pipe coupling	
1060	0070 6002 13	AR	Plastic tube		1210	0070 6002 13	AR	Plastic tube	
1065	0661 1000 27	1	Seal washer		1215	0661 1000 27	1	Seal washer	
1070	0581 0000 71	1	Pipe coupling		1220	0581 0000 71	1	Pipe coupling	
1075	0070 6002 05	AR	Plastic tube		1225	0070 6002 05	AR	Plastic tube	
1080	0661 1000 25	1	Seal washer		1230	0661 1000 25	1	Seal washer	
1085	0581 0000 35	1	Pipe coupling		1235	0581 0000 35	1	Pipe coupling	
1095	0581 0001 04	1	Pipe coupling		1245	0581 0001 04	1	Pipe coupling	
1100	0070 6002 13	AR	Plastic tube		1250	0070 6002 13	AR	Plastic tube	
1105	0581 0000 71	1	Pipe coupling		1255	0581 0000 71	1	Pipe coupling	
1110	0581 0000 86	1	Pipe coupling		1260	0581 0000 86	1	Pipe coupling	
1115	0661 1000 27	1	Seal washer		1265	0661 1000 27	1	Seal washer	
1130	0348 0102 08	4	Cable tie						

14

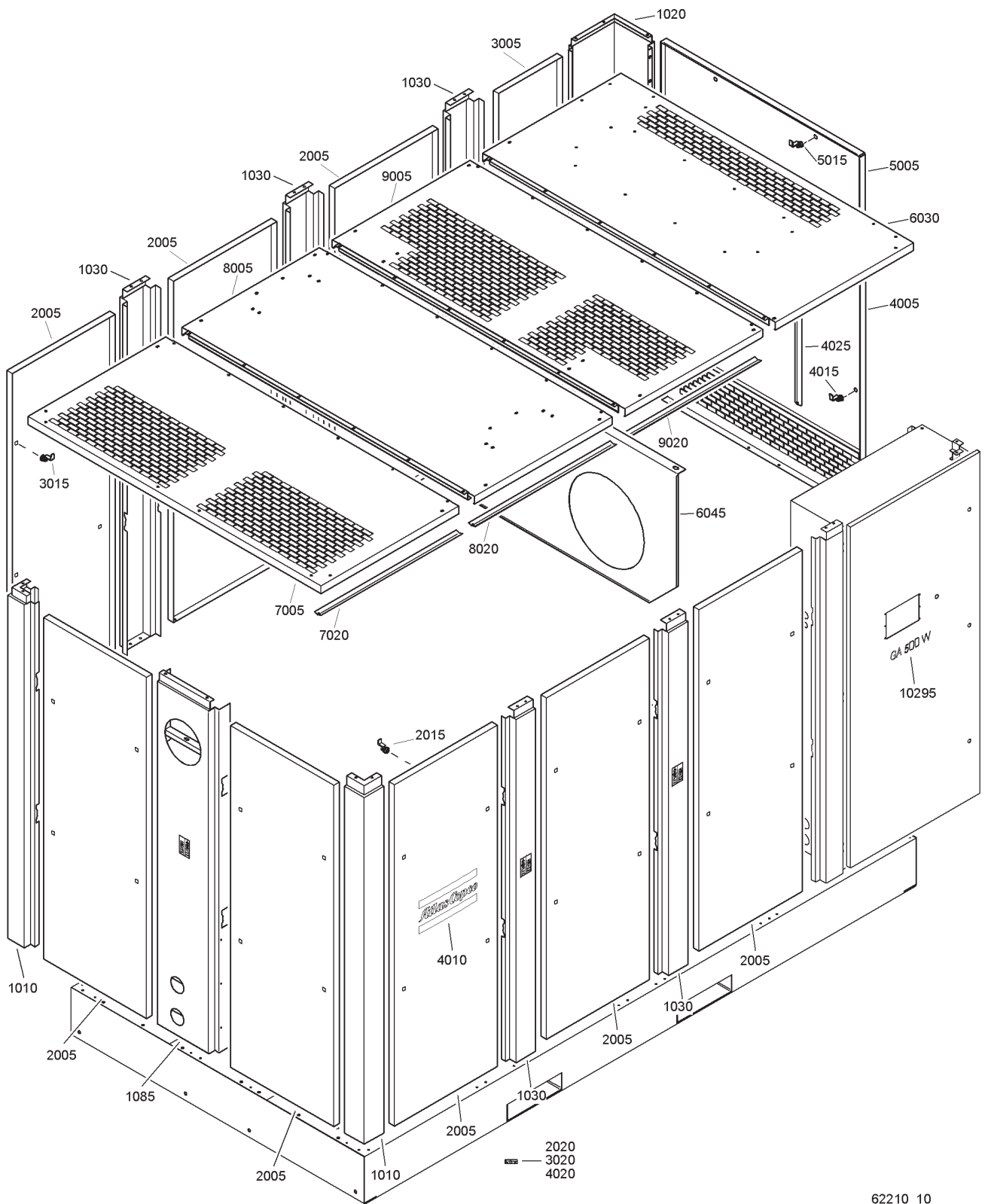


62269_06

Drain system - Oil Separator Condensate drain

Ref.	Part number	Qty	Name	Remarks	Ref.	Part number	Qty	Name	Remarks
1010	1621 2303 00	1	Support		1310	0348 0102 06	4	Cable tie	
1015	1619 2766 00	4	Bolt		1315	1079 9910 97	1	Label	
1020	0147 1322 03	3	Bolt		1320	0581 0000 45	1	Pipe coupling	
1025	0301 2335 00	3	Washer		1325	0661 1000 25	1	Seal washer	
1030	1613 9735 00	1	Oil can		1330	0070 6002 06	AR	Plastic tube	
1045	1613 7335 00	1	Hose nipple		1335	0581 0000 53	1	Pipe coupling	
1050	0070 6002 14	AR	Flexible		1340	0653 1124 00	1	Flat gasket	
1055	0560 0200 61	1	Elbow		1345	0581 0000 86	1	Pipe coupling	
1060	0070 6002 03	AR	Flexible		1350	0852 0010 33	1	Ball valve	
1065	0581 0000 35	1	Pipe coupling		2005	1614 9351 00	1	Housing	
1070	0661 1000 25	2	Seal washer		2006	1613 7299 00	1	Strainer	
1075	1614 9706 00	1	Hose nipple		2007	9125 6295 00	1	Seal washer	
1080	0070 6002 28	AR	Plastic tube		2008	1613 7297 00	1	Check valve	
1085	0347 6110 00	2	Hose clip		2010	1614 9352 00	1	Oil filter	
1090	1614 9876 00	1	Hose nipple		2015	1614 9707 00	1	Cover	
1095	0661 1000 31	1	Seal washer		2020	0661 1000 25	1	Seal washer	
1100	1614 9881 00	1	Bushing		2025	1614 9363 00	1	Pipe coupling	
1110	0348 0102 06	4	Cable tie		2030	1079 9913 69	1	Inform.label	
1115	1079 9910 97	1	Label		2035	1079 9912 28	1	Information lab	
1120	0581 0000 45	1	Pipe coupling		2040	1079 9912 07	1	Information lab	
1125	0661 1000 25	1	Seal washer		2045	1079 9920 17	1	Information lab	
1130	0070 6002 06	AR	Plastic tube		2050	0686 3716 45	1	Hexagon plug	
1135	0581 0000 53	1	Pipe coupling		2055	0661 1000 27	1	Seal washer	
1140	0653 1124 00	1	Flat gasket		2060	0686 3716 44	1	Hexagon plug	
1145	0581 0000 86	1	Pipe coupling		2065	0661 1000 25	1	Seal washer	
1150	0852 0010 33	1	Ball valve		3005	1614 9351 00	1	Housing	
1215	1619 2766 00	4	Bolt		3006	1613 7299 00	1	Strainer	
1220	0147 1322 03	3	Bolt		3007	9125 6295 00	1	Seal washer	
1225	0301 2335 00	3	Washer		3008	1613 7297 00	1	Check valve	
1230	1613 9735 00	1	Oil can		3010	1614 9352 00	1	Oil filter	
1245	1613 7335 00	1	Hose nipple		3015	1614 9707 00	1	Cover	
1250	0070 6002 14	AR	Flexible		3020	0661 1000 25	1	Seal washer	
1255	0560 0200 61	1	Elbow		3025	1614 9363 00	1	Pipe coupling	
1260	0070 6002 03	AR	Flexible		3030	1079 9913 69	1	Inform.label	
1265	0581 0000 35	1	Pipe coupling		3035	1079 9912 28	1	Information lab	
1270	0661 1000 25	2	Seal washer		3040	1079 9912 07	1	Information lab	
1275	1614 9706 00	1	Hose nipple		3045	1079 9920 17	1	Information lab	
1280	0070 6002 28	AR	Plastic tube		3050	0686 3716 45	1	Hexagon plug	
1285	0347 6110 00	2	Hose clip		3055	0661 1000 27	1	Seal washer	
1290	1614 9876 00	1	Hose nipple		3060	0686 3716 44	1	Hexagon plug	
1295	0661 1000 31	1	Seal washer		3065	0661 1000 25	1	Seal washer	
1300	1614 9881 00	1	Bushing						

15



62210_10

62210_10

Bodywork

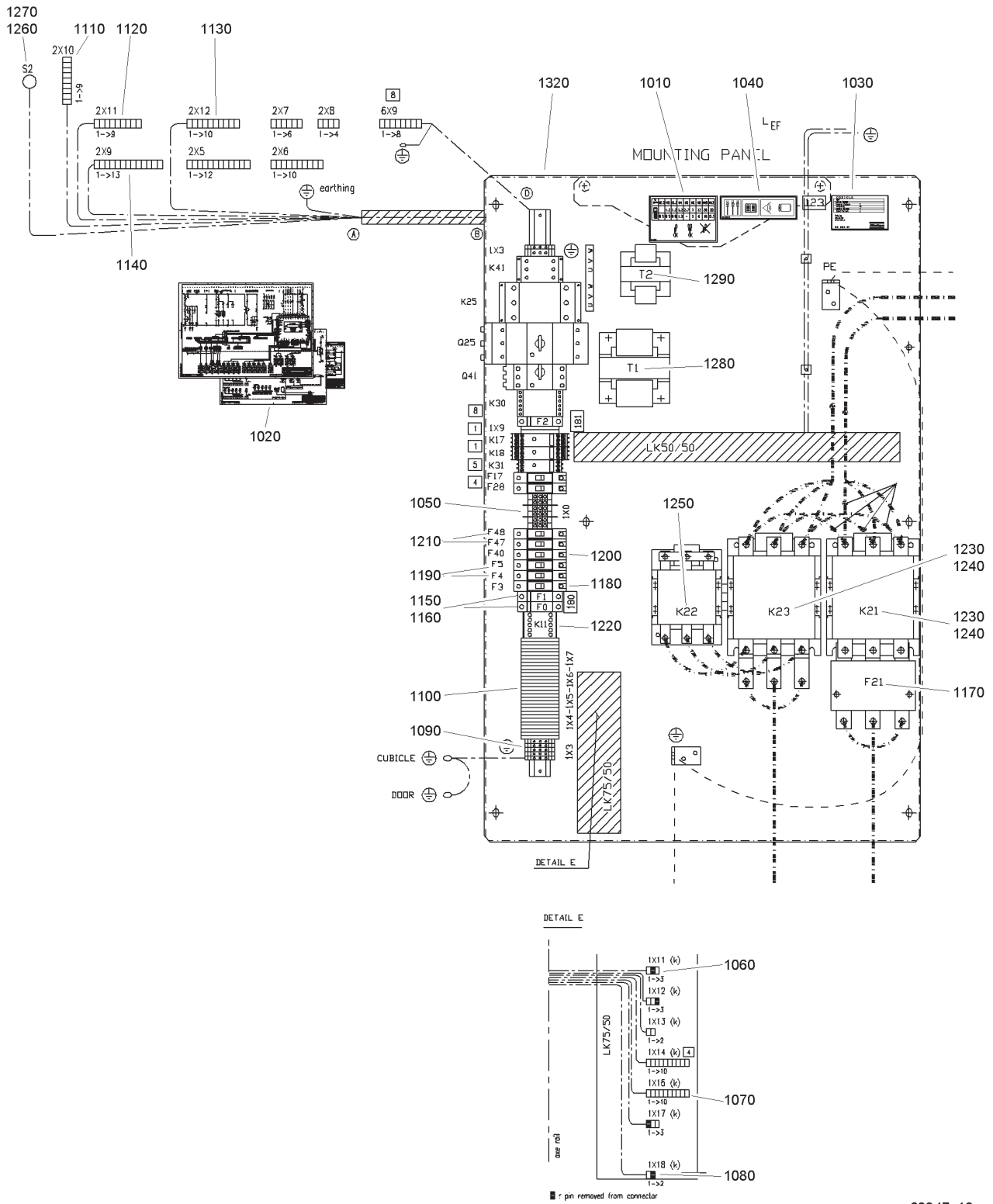
Ref.	Partnumber	Qty	Name	Remarks	Ref.	Partnumber	Qty	Name	Remarks
1010	1614 9502 80	2	Stay	1)	6025	1079 1472 06	10	Bolt	
1015	1619 2766 00	4	Bolt		6030	1621 1473 80	1	Roof	
1020	1621 2129 80	1	Stay	1)	6040	1079 1472 06	15	Bolt	
1025	1619 2766 00	3	Bolt		6045	1621 1462 00	1	Support	
1030	1621 0426 80	4	Stay	1)		1621 1468 80	1	Roof	2)
	1079 9901 09	• 1	Label		7005	1621 1468 00	• 1	Roof	
1035	1619 2766 00	10	Bolt		7020	1613 1312 30	• 4	Strip	
1085	1621 2135 80	1	Stay	1)		1621 1470 80	1	Roof	2)
	1614 9592 80	8	Door	1)	8005	1621 1470 00	• 1	Roof	
2005	1614 9592 00	• 8	Door		8020	1613 1312 30	• 4	Strip	
2015	2252 7237 00	• 4	Doorlock			1621 1476 80	1	Roof	1)
2020	1619 5188 00	• AR	Seal		9005	1621 1476 00	• 1	Roof	
	1614 9593 80	1	Door	1)	9020	1613 1312 15	• 4	Strip	
3005	1614 9593 00	• 1	Door		10295		1	Label	
3015	2252 7237 00	• 4	Doorlock			1614 9425 28		GA315 W	
3020	1619 5188 00	• AR	Seal			1614 9425 53		GA355 W	
	1621 2131 80	2	Door	1)		1614 9425 54		GA400 W	
4005	1621 2131 00	• 1	Door			1614 9425 55		GA450 W	
4010	0690 1140 01	• 1	House mark			1614 9425 56		GA500 W	
4015	2252 7237 00	• 5	Doorlock						
4020	1619 5188 00	• AR	Seal						
4025	1613 1312 34	• 2	Strip						
	1621 2133 80	1	Door	1)					
5005	1621 2133 00	• 1	Door						
5015	2252 7237 00	• 2	Doorlock						
6015	1079 1472 06	17	Bolt						

Lined with / Bekleed met / Beklädd med / Ausgekleidet mit /
 Garnir de / Rivestido de / Allineato con / Foret med /
 Revestido com / Kledd med / Vuorattu :
 1) Foam : 0395 6001 69 (AR) 50 x 2040 x 1650 self-adhesive
 2) Foam : 0395 6001 60 (AR) 50 x 2040 x 1650

Cubicle

Ref.	Partnumber	Qty	Name	Remarks	Ref.	Partnumber	Qty	Name	Remarks
	1621 2272 80	1	Cubicle ass'y		1055	1079 9901 09 •	1	Label	
1005	1621 2272 00 •	1	Cubicle		2015	1619 2766 00	7	Bolt	
1010	1621 2273 00 •	1	Door		2020	1079 1472 06	6	Bolt	
1015	1619 7704 00 •	1	Lock		2035	1089 9154 02	2	Key	
1020	1614 9106 03 •	3	Pin		2040	1621 0478 00	1	Label	
1025	1202 6584 00 •	AR	Seal		2045	1088 1001 01	1	Warning mark	
1035	1621 2357 00 •	1	Raceway		2080	1621 3192 00	1	Support	
1040	0301 2335 00 •	5	Washer		2085	1621 4089 00	1	Screen	
1045	0277 1310 00 •	5	Cap nut		2090	1614 6596 00	4	Knurled nut	
1050	1621 2358 00 •	1	Raceway		2095	1088 1001 04	1	Warning mark	

17



62247_12

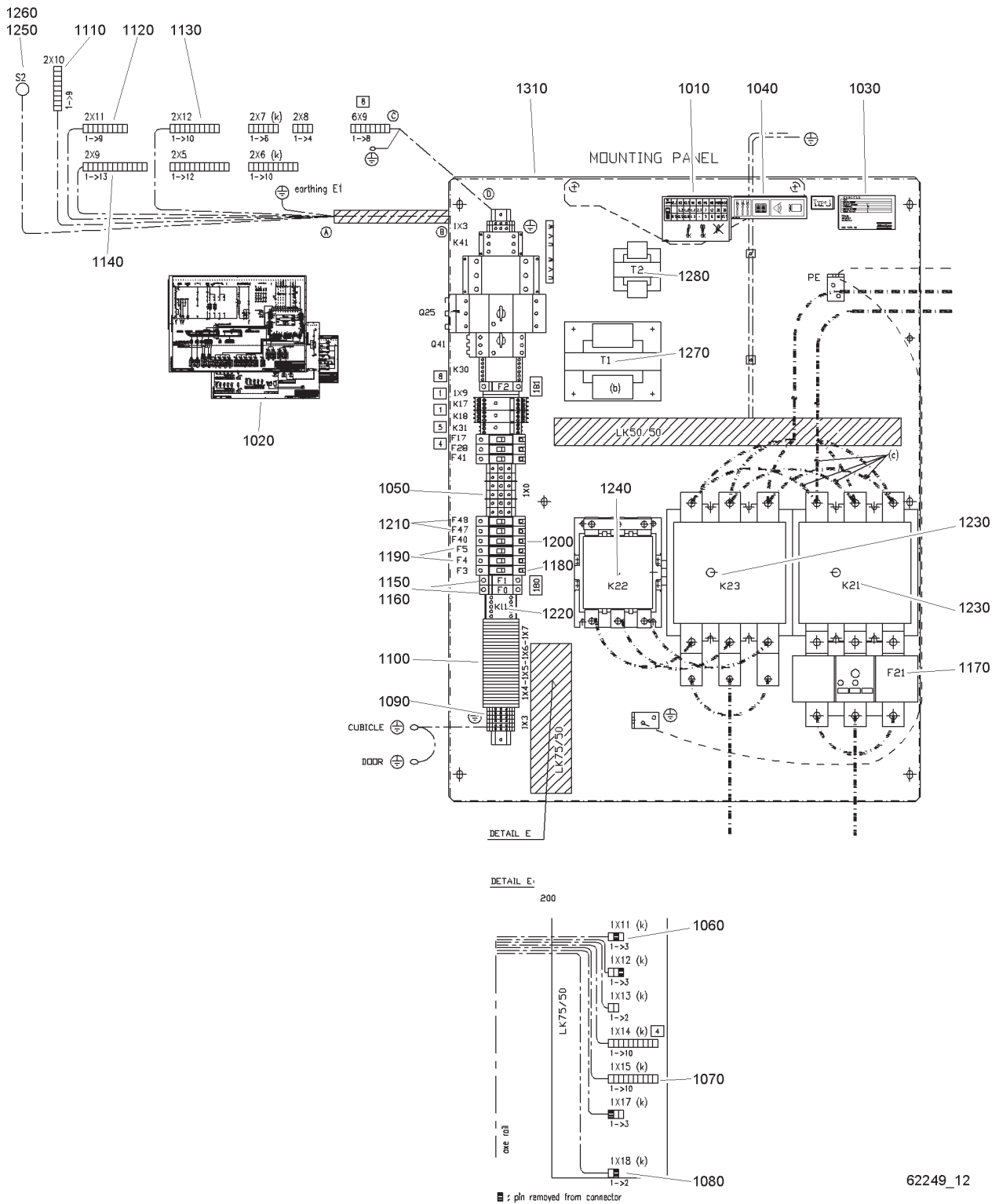
Start cubicle - star/delta

- **IEC - GA315 400-500V/50Hz, GA355 380V/60Hz, GA355 400-500V/50Hz, GA400 460V/60Hz, GA400 500V/50Hz, GA450 500V/50Hz**

17

Ref.	Partnumber	Qty	Name	Remarks	Ref.	Part number	Qty	Name	Remarks
		1	Cubicle		1180	1089 9203 11 •	1	Circuit breaker	
	1900 3147 15		GA315 400V/50Hz		1190	1089 9203 04 •	2	Circuit breaker	
	1900 3147 14		GA315 500V/50Hz		1200	1089 9203 10 •	1	Circuit breaker	
	1900 3147 50		GA355 380V/60Hz		1210	1089 9203 23 •	2	Circuit breaker	
	1900 3147 15		GA355 400V/50Hz		1220	1089 9415 17 •	1	Contactora	
	1900 3147 14		GA355 500V/50Hz		1230	•	2	Contactora	
	1900 3147 50		GA400 460V/60Hz			1089 9415 74		GA315 500V/50Hz, GA355 500V/50Hz	
	1900 3147 50		GA400 500V/50Hz			1089 9415 74		GA355 400V/50Hz, GA315 500V/50Hz, GA315 400V/50Hz	
	1900 3147 50		GA450 500V/50Hz			1089 9415 75		GA400-450 500V/50Hz, GA355 380V/60Hz, GA400 460V/60Hz	
1010	1079 9906 09 •	1	Label		1240	1089 9415 09 •	2	Contact block	
1020	9823 1897 31 •	1	Label		1250	•	1	Contactora	
1030	1613 6639 00 •	1	Data plate			1089 9415 78		GA315 500V/50Hz, GA355 500V/50Hz	
1040	1079 9901 68 •	1	Label			1089 9415 79		GA355 400V/50Hz, GA315 400V/50Hz	
1050	1089 0506 06 •	6	Terminal			1089 9415 80		GA400-450 500V/50Hz, GA355 380V/60Hz, GA400 460V/60Hz	
1060	1088 0031 03 •	1	Connector		1260	1089 0362 51 •	1	Emergency stop button	
1070	1088 0031 10 •	1	Connector		1270	1089 0362 50 •	2	Contact block	
1080	1088 0031 02 •	1	Connector		1280	1089 9436 08 •	1	Trafo	
1090	1089 0506 27 •	7	Terminal		1290	1089 9436 11 •	1	Trafo	
1100	1089 9398 11 •	31	Terminal		1320	1621 4047 00 •	1	Mounting plate	
1110	1088 0031 49 •	1	Connector						
1120	1088 0031 29 •	1	Connector						
1130	1088 0031 30 •	1	Connector						
1140	1088 0031 13 •	1	Connector						
1150	1089 0612 25 •	2	Fuse						
1160	1089 0612 01 •	2	Fuse holder						
1170	1089 9446 23 •	1	Overload relay						

18



62249_12

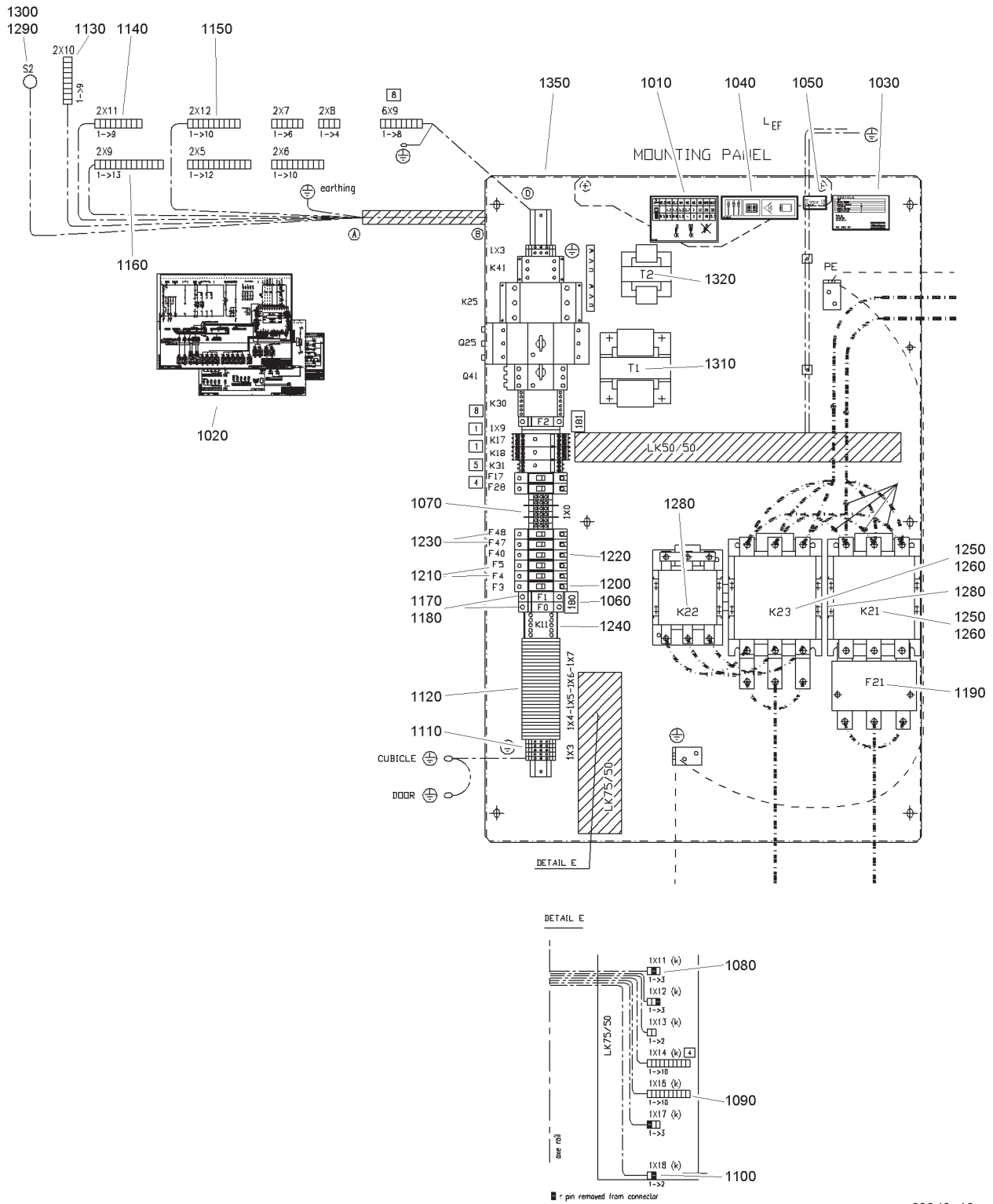
Start cubicle - star/delta

- **IEC - GA355 460V/60Hz, GA400 380V/60Hz, GA400 400V/50Hz,
GA450 400V/50Hz, GA450 460V/60Hz**

18

Ref.	Partnumber	Qty	Name	Remarks	Ref.	Partnumber	Qty	Name	Remarks
	1900 3147 51	1	Cubicle		1180	1089 9203 04 •	1	Circuit breaker	
	1900 3147 51		GA355 460V/60Hz		1190	1089 9203 04 •	2	Circuit breaker	
	1900 3147 51		GA400 380V/60Hz		1200	1089 9203 10 •	1	Circuit breaker	
	1900 3147 52		GA400 400V/50Hz		1210	1089 9203 23 •	2	Circuit breaker	
	1900 3147 52		GA450 400V/50Hz		1220	1089 9415 17 •	1	Contactora	
	1900 3147 52		GA450 460V/60Hz		1230	•	2	Contactora	
1010	1079 9906 09 •	1	Label			1089 9221 13		GA355 460V/60Hz, GA400 380V/60Hz, GA400 400V/ 50Hz	
1020	9823 1897 31 •	1	Label			1089 9221 15		GA450 400V/50Hz, GA450 460V/60Hz	
1030	1613 6639 00 •	1	Data plate		1240	•	1	Contactora	
1040	1079 9901 68 •	1	Label			1089 9415 74		GA355 460V/60Hz, GA400 380V/60Hz, GA400 400V/ 50Hz	
1050	1089 0506 06 •	6	Terminal			1089 9415 75		GA450 400V/50Hz, GA450 460V/60Hz	
1060	1088 0031 03 •	1	Connector		1250	1089 0362 51 •	1	Emergency stop button	
1070	1088 0031 10 •	1	Connector		1260	1089 0362 50 •	2	Contact block	
1080	1088 0031 02 •	1	Connector		1270	1089 9436 09 •	1	Trafo	
1090	1089 0506 27 •	7	Terminal		1280	1089 9436 11 •	1	Trafo	
1100	1089 9398 11 •	31	Terminal		1310	1621 4049 00 •	1	Mounting plate	
1110	1088 0031 49 •	1	Connector						
1120	1088 0031 29 •	1	Connector						
1130	1088 0031 30 •	1	Connector						
1140	1088 0031 13 •	1	Connector						
1150	1089 0612 25 •	2	Fuse						
1160	1089 0612 01 •	2	Fuse						
1170	1089 9446 24 •	1	Overload relay						

19



62248_12

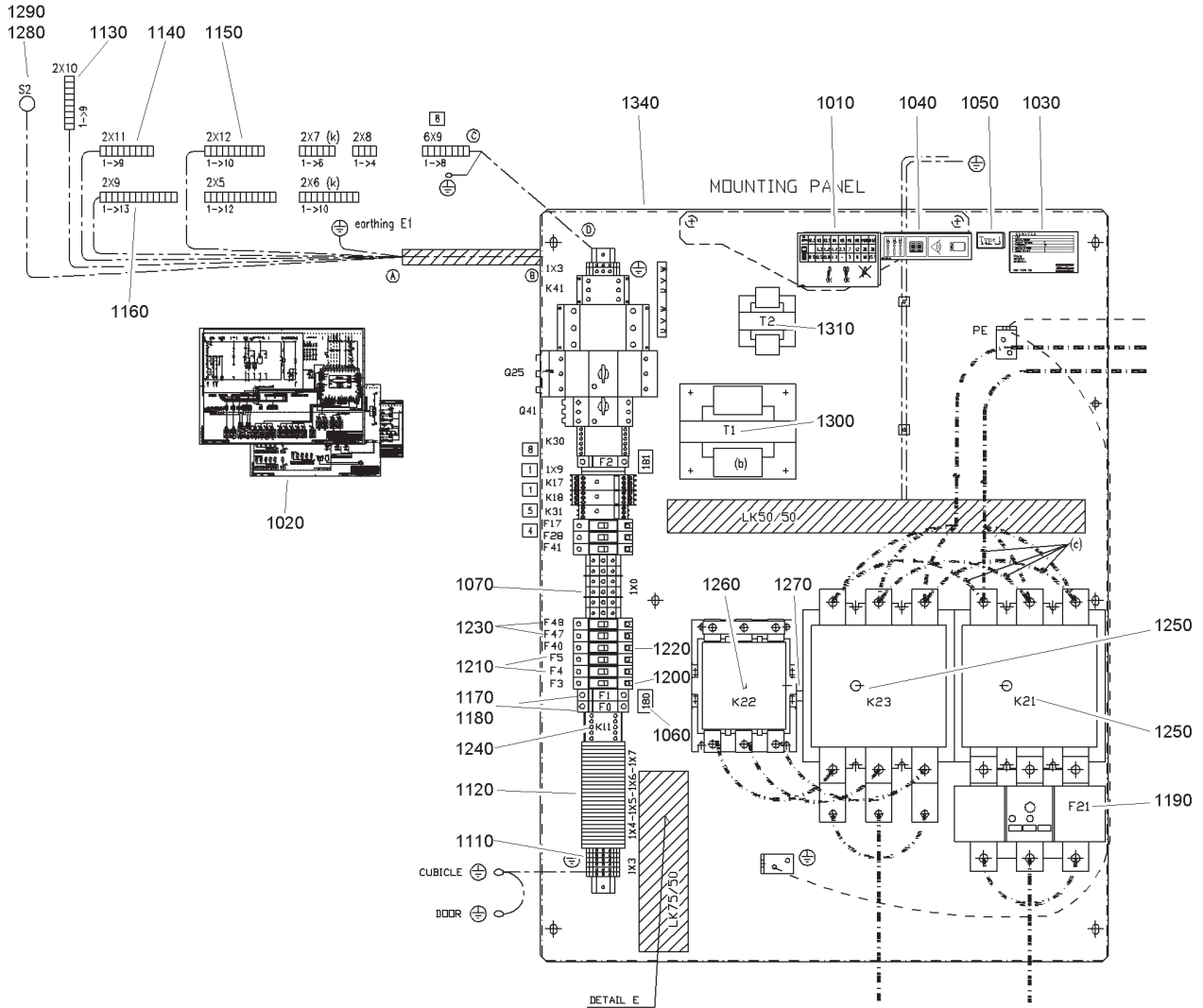
Start cubicle - star/delta

- **CSA/UL - GA355 460-575V/60Hz, GA400 460-575V/60Hz,
GA450 575V/60Hz**

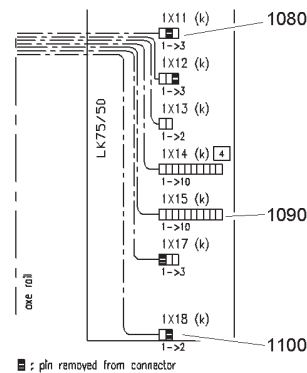
19

Ref.	Partnumber	Qty	Name	Remarks	Ref.	Part number	Qty	Name	Remarks
	1900 3148 18		GA355 460V/60Hz		1220	1089 9203 34	• 1	Circuit breaker	
	1900 3148 16		GA355 575V/60Hz		1230	1089 9203 31	• 2	Circuit breaker	
	1900 3148 18		GA400 460V/60Hz		1240	1089 9415 17	• 1	Contactactor	
	1900 3148 17		GA400 575V/60Hz		1250		• 2	Contactactor	
	1900 3148 18		GA450 575V/60Hz			1089 9415 83		GA355 575V/60Hz	
1010	1079 9906 09	• 1	Label			1089 9415 77		GA355-400 460V/60Hz, GA450 575V/60Hz	
1020	9823 1897 31	• 1	Label			1089 9415 76		GA400 575V/60Hz	
1030	1614 8949 00	• 1	Data plate		1260	1089 9415 09	• 2	Contact block	
1040	1079 9901 68	• 1	Label		1270		• 1	Contactactor	
1050	1079 9911 01	• 1	Label type 1			1089 9415 62		GA355 575V/60Hz	
1060	1079 9922 70	• 1	Fuse label			1089 9415 82		GA355-400 460V/60Hz, GA450 575V/60Hz	
1070	1089 0506 06	• 6	Terminal			1089 9415 63		GA400 575V/60Hz	
1080	1088 0031 03	• 1	Connector		1280	1089 9415 91	• 1	Mechanical interlock	
1090	1088 0031 10	• 1	Connector		1290	1089 0362 51	• 1	Emergency stop button	
1100	1088 0031 02	• 1	Connector		1300	1089 0362 50	• 2	Contact block	
1110	1089 0506 27	• 7	Terminal		1310		• 1	Trafo	
1120	1089 9398 11	• 31	Terminal			1089 9436 07		GA355 575V/60Hz	
1130	1088 0031 49	• 1	Connector			1089 9436 08		GA355-400 460V/60Hz , GA450 575V/60Hz	
1140	1088 0031 29	• 1	Connector			1089 9436 08		GA400 575V/60Hz	
1150	1088 0031 30	• 1	Connector		1320	1089 9436 11	• 1	Trafo	
1160	1088 0031 13	• 1	Connector		1350	1621 4047 00	• 1	Mounting plate	
1170	1089 9168 26	• 2	Connector						
1180	1089 0612 01	• 2	Connector						
1190	1089 9446 23	• 1	Overload relay						
1200	1089 9203 38	• 1	Circuit breaker						
1210	1089 9203 36	• 2	Circuit breaker						

20



DETAIL E:
200

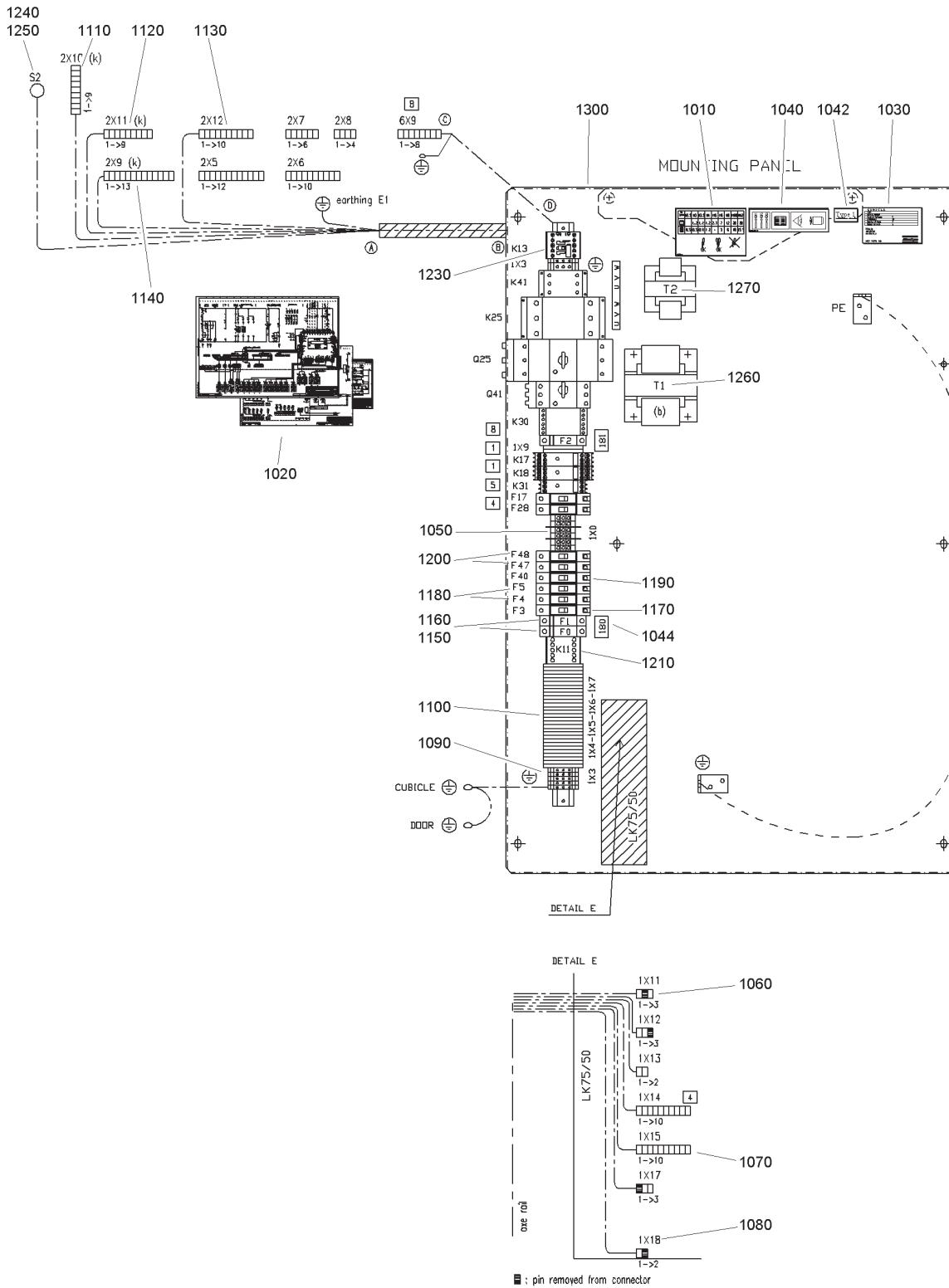


62250_12

Start cubicle - star/delta - CSA/UL - GA450 460V/60Hz

Ref.	Partnumber	Qty	Name	Remarks	Ref.	Partnumber	Qty	Name	Remarks
	1900 3148 20	1	Cubicle		1170	1089 9168 41 •	2	Fuse	
1010	1079 9906 09 •	1	Label		1180	1089 0612 01 •	2	Fuse holder	
1020	9823 1897 31 •	1	Label		1190	1089 9446 24 •	1	Overload relay	
1030	1614 8949 00 •	1	Data plate		1200	1089 9203 39 •	1	Circuit breaker	
1040	1079 9901 68 •	1	Label		1210	1089 9203 36 •	2	Circuit breaker	
1050	1079 9911 01 •	1	Label type 1		1220	1089 9203 34 •	1	Circuit breaker	
1060	1079 9922 98 •	1	Fuse label		1230	1089 9203 31 •	2	Circuit breaker	
1070	1089 0506 03 •	6	Terminal		1240	1089 9415 17 •	1	Contacto	
1080	1088 0031 03 •	1	Connector		1250	1089 9221 39 •	2	Contacto	
1090	1088 0031 10 •	1	Connector		1260	1089 9221 40 •	1	Contacto	
1100	1088 0031 02 •	1	Connector		1270	1089 9216 08 •	1	Interlock	
1110	1089 0506 27 •	7	Terminal		1280	1089 0362 51 •	1	Emergency stop button	
1120	1089 9398 11 •	31	Terminal		1290	1089 0362 50 •	2	Contact block	
1130	1088 0031 49 •	1	Connector		1300	1089 9436 10 •	1	Trafo	
1140	1088 0031 29 •	1	Connector		1310	1089 9436 11 •	1	Trafo	
1150	1088 0031 30 •	1	Connector		1340	1621 4049 00 •	1	Mounting plate	
1160	1088 0031 13 •	1	Connector						

21



62251_12

Start cubicle - without starter

- **Without motor - 3-3.3-6-6.6kV/50Hz IEC,
2.3 -3.3-4.16-6.6kV/60Hz CSA/UL**

Ref.	Partnumber	Qty	Name	Remarks	Ref.	Partnumber	Qty	Name	Remarks
		1	Cubicle		1150		• 2	Fuse	
	1900 3147 01		3kV/50Hz IEC			1089 0612 25		50Hz IEC	
	1900 3147 01		3.3kV/50Hz IEC			1089 9168 27		60Hz CSA/UL	
	1900 3147 01		6kV/50Hz IEC		1160	1089 0612 01	• 2	Fuse holder	
	1900 3147 01		6.6kV/50Hz IEC		1170		• 1	Circuit breaker	
	1900 3147 01		Without motor			1089 9203 11		50Hz IEC	
	1900 3148 01		2.3kV/60Hz CSA/UL			1089 9203 38		60Hz CSA/UL	
	1900 3148 01		3.3kV/60Hz CSA/UL		1180		• 2	Circuit breaker	
	1900 3148 01		4.16kV/60Hz CSA/UL			1089 9203 04		50Hz IEC	
	1900 3148 01		6.6kV/60Hz CSA/UL			1089 9203 36		60Hz CSA/UL	
	1900 3148 01		Without motor		1190		• 1	Circuit breaker	
1010	1079 9906 09	• 1	Label			1089 9203 10		50Hz IEC	
1020	9823 1897 32	• 1	Label			1089 9203 34		60Hz CSA/UL	
1030	1613 6639 00	• 1	Data plate		200		• 2	Circuit breaker	
1040	1079 9901 68	• 1	Label			1089 9203 23		50Hz IEC	
1042		• 1	Label type 1			1089 9203 31		60Hz CSA/UL	
	1079 9911 01		CSA/UL		1210	1089 9415 17	• 1	Contact	
1044		• 1	Fuse label		1220	1089 9415 02	• 1	Contact block	
	1079 9922 74		CSA/UL		1230		• 1	Relay	
1050	1089 0506 06	• 6	Terminal			1089 9438 02		50Hz IEC	
1060	1088 0031 03	• 1	Connector			1089 9438 03		60Hz CSA/UL	
1070	1088 0031 10	• 1	Connector		1240	1089 0362 51	• 1	Emergency stop button	
1080	1088 0031 02	• 1	Connector		1250	1089 0362 50	• 2	Contact block	
1090	1089 0506 27	• 7	Terminal		1260		• 1	Trafo	
1100	1089 9398 11	• 31	Terminal			1089 9436 07		50Hz IEC	
1110	1088 0031 49	• 1	Connector			1089 9436 08		60Hz CSA/UL	
1120	1088 0031 29	• 1	Connector		1270	1089 9436 11	• 1	Trafo	
1130	1088 0031 30	• 1	Connector		1300	1621 4047 00	• 1	Mounting plate	
1140	1088 0031 13	• 1	Connector						

Atlas Copco Stationary Air Compressors

GA315 - GA355 - GA400 - GA450 - GA500

Parts list

What sets Atlas Copco apart as a company is our conviction that we can only excel in what we do if we provide the best possible know-how and technology to really help our customers produce, grow and succeed.

There is a unique way of achieving that - we simply call it the Atlas Copco way. It builds on **interaction**, on long-term relationships and involvement in the customers' process, needs and objectives. It means having the flexibility to adapt to the diverse demands of the people we cater for.

It's the **commitment** to our customers' business that drives our effort towards increasing their productivity through better solutions. It starts with fully supporting existing products and continuously doing things better, but it goes much further, creating advances in technology through **innovation**. Not for the sake of technology, but for the sake of our customer's bottom line and peace-of-mind.

That is how Atlas Copco will strive to remain the first choice, to succeed in attracting new business and to maintain our position as the industry leader.

